

AGATHA CHRISTIE'S



John Serenbo*
& Russ Holm
Photos by
Shanna Paxton
Photography

MURDER ON THE ORIENT EXPRESS

ADAPTED FOR THE STAGE BY

KEN LUDWIG

OCTOBER 3 - NOVEMBER 2 HARLEQUIN



**Supporting the Arts Locally
for more than 20 years**

www.parcfoundation.org
info@parcfoundation.org

360-352-0980



CAST

Hercule Poirot..... John Serembe*
 Monsieur Bouc Russ Holm
 Mary Debenham Cassie Jo Fastabend
 Hector MacQueen Levi Redmill
 Michel the Conductor/Head Waiter..... Ben Stahl
 Princess Dragomiroff..... Jana Tyrrell
 Greta Ohlsson.....Audrey Herold
 Countess AndrenyiBig Anderson
 Helen Hubbard Ann Flannigan
 Colonel Arbuthnot/Samuel Ratchett Adam Martin

TIME & PLACE

1934; aboard the Orient Express as it travels from Istanbul to Western Europe

RUN TIME

Two hours, with one 20 minute intermission

CREATIVE TEAM

Director Scott Nolte**
 Scenic Designer Bruce Haasl
 Costume Designer..... Jae hee Kim
 Lighting Designer Mark Thomason
 Sound Designer Keith Jewell
 Properties Designer Gail Thomason
 Makeup/Hair/Wigs Designer Luna McMeen
 Dialect Coach Marianna de Fazio

PRODUCTION TEAM

Stage Manager..... Gina Salerno
 Assistant Stage Manager,
 Fight and Intimacy Consultant Celeste Elaine
 Light/Sound Board Operator Richard Wheeler
 Stagehand Logan Simpson
 Wardrobe Manager Corrine Higdon

Special thanks to: Tacoma Little Theater, Tacoma Musical Playhouse, Kerry and Olive Beardsley, volunteer carpenter Rich Kalman, and costume shop volunteers Vicki Steigner, Theo Ernesti, and Pandora Touart.

Agatha Christie's Murder On The Orient Express adapted by Ken Ludwig was originally staged by McCarter Theater Center, Princeton, NJ Emily Mann, Artistic Director, Timothy J. Shields, Managing Director. The production subsequently transferred to Hartford Stage, Harford, CT Darko Tresnjak, Artistic Director, Michael Stotts, Managing Director.

"Agatha Christie's Murder on the Orient Express" is presented by arrangement with Concord Theatricals on behalf of Samuel French, Inc. www.concordtheatricals.com



*Appearing through an Agreement between this theatre, Harlequin Productions, and Actors' Equity Association, the Union of Professional Actors and Stage Managers in the United States.

** Scott Nolte is a member of the Stage Directors and Choreographers Society.



DIRECTOR'S NOTE

"Do you promise that your detectives shall well and truly detect the crimes presented to them using those wits which it may please you to bestow upon them and not placing reliance on nor making use of Divine Revelation, Feminine Intuition, Mumbo Jumbo, Jiggery-Pokery, Coincidence, or Act of God?"

Detection Club Oath, 1929, Written by Dorothy L. Sayers



All aboard!

Welcome to ***Murder on the Orient Express*** and a trip back to the Golden Age of detective fiction with luminaries like G.K. Chesterton, Dorothy L. Sayers, and, of course, Dame Agatha Christie

The oath above, however fanciful, reflected the authors' commitment to excellence and to giving the reader a fair chance at following the clues to a possible resolution of the crime. The Club had a longer "Decalogue" of 10 guidelines, like: *The detective must not light on any clues which are not instantly produced for the inspection of the reader...The stupid friend of the detective, the Watson, must not conceal any thoughts which pass through his mind; his intelligence must be slightly, but very slightly, below that of the average reader. And... Not more than one secret room or passage is allowable.*

The Golden Age detectives also had near-immutable moral and ethical codes, and their pursuit of justice had the weight of a higher calling.

Readers of contemporary mystery and detective fiction might sense a contrast with newer writers like Mícheal Connelly, Len Deighton, and Nelson DeMille (and Nordic Noir) whose literary worlds are darker, messier, and morally conflicted, and the detectives are more ethically fraught. Our Golden Age detectives, pre-WWII, were inclined to practice their trade in the English countryside and exotic locations, estates and trains, with their morality and worldview intact.

Which brings us back to the detection standards, eclectic characters, setting of our play, and our detective extraordinaire, M. Hercule Poirot. ***Murder on the Orient Express*** is the eleventh novel or short story featuring Poirot, so the character is still evolving. However, as Poirot searches for the truth to resolve the murder, the histories and ethics of everyone in our story become intertwined and murky. The challenge is not personally harmless for M Poirot, too.

All aboard, and good luck, mystery fans.

Scott Nolte, Director



OLY ARTS

Find out 24/7 what's going on
in the arts of the South Sound

at: **OLYARTS.COM**



olyarts



olympiaartsnews

SUBSCRIBE to have our
stories & Calendar sent
straight to your inbox!

We do NOT give out your information.



Post your arts event for **FREE**
in our **CALENDAR**

The 10 Commandments of Detective Fiction by Ronald Arbuthnott Knox (1888 - 1957)

1. The criminal must be mentioned in the early part of the story, but must not be anyone whose thoughts the reader has been allowed to follow.
2. All supernatural or preternatural agencies are ruled out as a matter of course.
3. Not more than one secret room or passage is allowable.
4. No hitherto undiscovered poisons may be used, nor any appliance which will need a long scientific explanation at the end.
5. No "Chinaman" must figure in the story.
6. No accident must ever help the detective, nor must he ever have an unaccountable intuition which proves to be right.
7. The detective himself must not commit the crime.
8. The detective is bound to declare any clues upon which he may happen to light.
9. The stupid friend of the detective, the Watson, must not conceal from the reader any thoughts which pass through his mind; his intelligence must be slightly, but very slightly, below that of the average reader.
10. Twin brothers, and doubles generally, must not appear unless we have been duly prepared for them.



Agatha Christie

Born in Torquay in 1890, Agatha Christie became, and remains, the best-selling novelist of all time.

She is best known for her 66 detective novels and 14 short story collections, as well as the world's longest-running play – *The Mousetrap*. Her

books have sold over a billion copies in the English language and a billion in translation.

By the age of 18, Agatha was already writing short stories, which her mother Clara had suggested she do to stave off boredom while in bed with influenza. Family friend and author Eden Philpotts offered shrewd and constructive advice: "*The artist is only the glass through*

which we see nature, and the clearer and more absolutely pure that glass, so much the more perfect picture we can see through it. Never intrude yourself."

In 1917, while working as an apothecary, Agatha decided to write a detective story after her sister Madge bet that she couldn't write a good one. Agatha rose to the challenge, at the same time seeking to relieve some of the monotony of dispensing. She first worked out her plot and then "found" her murderer on a tram in Torquay. As for her detective...

During the First World War, thousands of refugees fled the fighting in Belgium to settle in England. The people of Torquay welcomed them, and Agatha thought that a Belgian refugee, a former great Belgian policeman, would make an excellent detective for this first novel, which became *The Mysterious Affair at Styles*. Hercule Poirot was born.

Excerpted from www.agathachristie.com



Ken Ludwig

Ken Ludwig has had six productions on Broadway and eight in London's West End. His 34 plays and musicals are staged around the world and throughout the United States every night of the year.

His first play, *Lend Me a Tenor*, won two Tony Awards

and was called "one of the classic comedies of the 20th century" by The Washington Post. *Crazy For You* is currently running on London's West End. It was previously on Broadway for five years, on the West End for three, and won the Tony and Olivier Awards for Best Musical.

In addition, he has won the Edwin Forrest Award for Contributions to the American Theatre, two Laurence Olivier Awards, two Helen Hayes Awards, the Charles MacArthur Award and the Edgar Award for Best Mystery of the Year. His other plays include *Moon Over Buffalo*, *Leading Ladies*, *Baskerville*, *Sherwood*, *Twentieth Century*, *Dear*

Jack, *Dear Louise*, *A Fox on the Fairway*, *A Comedy of Tenors*, *The Game's Afoot*, *Shakespeare in Hollywood* and *Murder on the Orient Express*. They have starred, among others, Alec Baldwin, Carol Burnett, Kristen Bell, Tony Shaloub, Joan Collins and Henry Goodman.

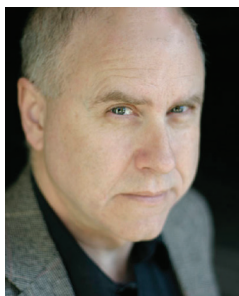
His book *How to Teach Your Children Shakespeare*, published by Penguin Random House, won the Falstaff Award for Best Shakespeare Book of the Year, and his essays on theatre are published in the Yale Review. He gives the Annual Ken Ludwig Playwriting Scholarship at the Kennedy Center American College Theater Festival, and he served on the Board of Governors for the Folger Shakespeare Library for ten years. His first opera, *Tenor Overboard*, opened at the Glimmerglass Festival in July 2022. His most recent world premieres were *Lend Me A Soprano* and *Moriarty*, and his newest plays and musicals include *Pride and Prejudice Part 2: Napoleon at Pemberley* and *Lady Molly of Scotland Yard*.

His plays include commissions from the Agatha Christie Estate, the Royal Shakespeare Company, The Old Globe Theatre, and the Bristol Old Vic.

For more information visit www.kenludwig.com.

MURDER ON THE ORIENT EXPRESS

CAST



John Serembe* (he/him)
- *Hercule Poirot*

With Harlequin, John has performed as the Judge/Ensemble in *The Highest Tide*, Maxwell/Don Kitsch in *The Art of Racing In The Rain*, Mr. Mushnick in *Little Shop of Horrors*, Brack in *Hedda Gabler*, Gordy and the Great Zabatino in two Stardust shows, and as a multitude of characters in *Ken Ludwig's Baskerville: A Sherlock Holmes Mystery* and *The 39 Steps*. Other local productions include: Scrooge in *Tiny Tim's Christmas Carol*, Badger in *Wind In The Willows* at OFT, O'Brien in *1984*, and a monstrosity in *The Head That Wouldn't Die*, both for TAO. In Los Angeles, he played Larry in the LA premiere of *Inspecting Carol*, Walter Pangbourne in *Move Over Mrs. Markham* at the Mukenthaller, Argan in *The Imaginary Invalid* and Tartuffe in *Tartuffe* at Arroyo Repertory, and Bunthorne in *Patience* at the Occidental Theatre Festival, among others. He has appeared around the country, including ten years with Nevada Shakespeare. at Fox Ridge in Henderson. He was also briefly on the tube in *Cheers*, *Scrubs*, *The Young and the Restless*, and a few others. As a designer, John has created projection and graphic design for Harlequin for several years.



Russ Holm (he/him)
- *Monsieur Bouc*

Russ has appeared in 50 Harlequin productions dating back to 1994, most recently as Capulet/Ensemble in *Romeo & Juliet* (2025) and Sidney Bruhl in *Deathtrap* (2024). For Harlequin, he has played, among other roles: Jacob Marley in *A Christmas Carol*, Dr. Rank in *A Doll's House*, the title role in *Cymbeline*, Malvolio in the original *A Rock 'n' Roll Twelfth Night*, Big Daddy in *Cat on a Hot Tin Roof*, and Riff Raff in both productions of *The Rocky Horror Show*. Elsewhere some of his favorite roles include: the dual roles of Richard Burbage and William Jaggard in *The Book of Will* (SPSCC), Edmund in *King Lear*, El Gallo in *The Fantasticks* (Electric City Theatre), Charlie in *The Foreigner*, Hines in *The Pajama Game* (Abbey Players), Kenickie in *Grease*, Arthur in *Camelot* (Summer Showcase), Mr. Peachum in *The Threepenny Opera* (Capital Playhouse), Geppetto in *Pinocchio* (Olympia Family Theatre) and Shylock in *The Merchant of Venice* (TAO). Russ is grateful for the opportunities to share stories on stage and looks forward to what lies ahead.



Cassie Jo Fastabend (she/her)
- *Mary Debenham*

Cassie has been in performing arts since childhood in areas of dance, music composition, and theater. She has been teaching youth theater and dance for over 12 years and has choreographed and performed in local productions for over a decade at TLT, Dukesbay, TMP, UW Tacoma, and Centerstage. This production is her very first with the Harlequin team, and she is excited to make her Olympia debut!



Levi Redmill (he/him)
- *Hector MacQueen*

Levi is an actor, stage combatant, and emerging intimacy director making his Harlequin debut! After receiving his BFA from Cornish College of the Arts in Acting and Original Works, Levi went on to perform as Tybalt/Friar in *Romeo and Juliet* and Macduff in *Macbeth* (Seattle Shakespeare Company Educational Tours), Sebastian in *Twelfth Night* (Greenstage), and, most recently, Aidan in *The Grown Ups* (Dacha Theatre). You can learn more about him on Instagram @BigJazzy-CheeseMan or visit his website leviredmill.com.



Ben Stahl (he/him) - *Michel the Conductor/Head Waiter*

Orient Express marks Ben's debut with Harlequin Productions, but you may have seen him nearby on stages in Tacoma or Federal Way. He received his BA in Theatre Arts from Western Washington University, where he appeared in *Convention* by Dan Erickson, creator of the television series *Severance*. Recent credits include Van Helsing in *Dracula* at Tacoma Arts Live and Reginald in *Miss Holmes* at Centerstage. Ben is also a published audiobook narrator with his own home recording studio. He would like to thank his friends and peers, particularly the Oregon Trail family, Kerry, Deya, Scott, Mickie, and Andrea, for their wisdom and support.

MURDER ON THE ORIENT EXPRESS



Jana Tyrrell (she/her)
- Princess Dragomiroff

Jana is thrilled to be back in a Harlequin production, having most recently appeared as Beggar Woman in *Sweeney Todd* and Mrs. Bennet/Charlotte Lucas in *Pride and Prejudice*. She is an Indiana native and a Purdue University theatre graduate. In addition to acting credits with the Oregon Shakespeare Festival,

Indianapolis Civic Theatre, and The Lyric Theatre, she has performed in multiple shows with Harlequin Productions, including *Deathtrap* (2024), *A Christmas Carol* (2021, 2022), *The Women*, *Long Day's Journey Into Night*, *The Glass Menagerie*, *The Importance of Being Ernest*, *Sylvia*, *A Streetcar Named Desire* and *Assassins*, to name a few. She was seen in Centralia College productions of *Once On This Island*, *Into the Woods*, *Pippin*, and *Third*, among others, and in *Next to Normal* and *Little Women* at Capital Playhouse. MLTYK to Brian, Megan, Jake, Melissa, Avery, and Grayson.



Audrey Herold (she/her)
- Greta Ohlsson

Audrey is a Seattle-based actor. Favorite credits include *Scandalton* (Dacha), *Last Days of Judas Iscariot* (Tacoma Arts Live), *Always Winter*, and *A Woman of No Importance* (Taproot Theatre). A proud Dacha Theatre company member, she received her BFA from Trinity Western and MFA from Seattle U.

All the love to Mari, Beth, and Tove for making this role possible. More at audreyherold.com



Big Anderson (any pronouns)
- Countess Andrenyi

Big is "delighting" to make her Harlequin debut. Big earned a BA in Visual Narrative Design from Seattle Pacific University. Most recently, Big appeared as Katherine Plumber in *Newsies* (ASTRA). Other credits include Sheila Birling in *An Inspector Calls* (Dukesbay Productions), Piglet in *Winnie the Pooh*

(New Muses Theatre Company), Meg Murry in *A Wrinkle in Time* (SPU), and Mabel Chiltern in *An Ideal Husband* (SPU). Big is often on-screen in local films and has performed with Princess Cruises and American Immersion Theater. Many thanks to friends and family for constant support and beverages.



Ann Flannigan (she/her)
- Helen Hubbard

Ann has been lucky enough to be a part of the Harlequin family since back in the Washington Center days, appearing in more than 20 productions. She was most recently seen as Unknown Male in *Is This A Room* earlier this season. Some past favorite productions include: *The Highest Tide*; *I Ought to Be in*

Pictures; *August: Osage County*; *Present Laughter*; *To Kill a Mockingbird*; *Fighting Over Beverly*; *End Days*; *The Last Schwartz*; *Frozen*; *A Streetcar Named Desire*, and *Arcadia*. On the other side of the stage at Harlequin, Ann directed *Dry Powder* and *La Bete*. She earned her bachelor's degree in theater from Lewis & Clark College. It's a delight to be a part of this grand production and creative ensemble.



Adam Martin (he/him)
- Colonel Arbuthnot/
Samuel Ratchett

Adam is a recent Texas transplant who is thrilled to be making his Harlequin (and Washington!) debut. Past credits include Lenny in *Rumors*, Barrymore in *I Hate Hamlet*, and Roat in *Wait Until Dark*. He would like to thank his family for all of their love and support.

MURDER ON THE ORIENT EXPRESS

CREATIVE TEAM

Scott Nolte** (he/him) - *Director*

Scott has been directing in the Seattle area since 1976 and recently stepped aside from his role as cofounder and Producing Artistic Director of Taproot Theatre Company after 44 years at the helm. Over the course of those years he directed over 200 mainstage and touring productions for TTC ranging from *The Odyssey* to *Godspell*, and *Around the World in 80 Days* to *The Whipping Man*. Most recently he directed *Babette's Feast* and *The Spitfire Grill* for Taproot, and *Kim's Convenience* for Tacoma Arts Live. Scott has been an adjunct professor at the Eduardo Turrall Cultural Association (Leon, Spain) and Seattle Pacific University's School of Fine and Performing Arts. Scott is a member of the Society of Stage Directors and Choreographers. The Noltes, Scott and his wife, actor/teacher Pamela Nolte, are both second-generation Seattleites and have two adult children. This is his second time working with Harlequin, having previously directed *Building Madness* in 2023.

Bruce Haasl (he/him) - *Scenic Design*

Bruce has designed, built, and painted sets for more than 300 productions, including *Cymbeline*, *I Am My Own Wife*, *The Women*, *This Flat Earth*, *Baskerville*, *What the Constitution Means to Me*, and *Ms. Holmes and Ms. Watson - Apt 2B* here at Harlequin, and currently serves as Harlequin's Technical Director. His work has been seen on stages all across the South Sound and beyond; Capital Playhouse, Tacoma Musical Playhouse, Centerstage, and The Black Hills Playhouse (SD), among others. Bruce spends a fair amount of time in front of the curtains as well. Harlequin audiences may remember Bruce from *Sweeney Todd* (2024), and as Ernst Ludwig in *Cabaret* (2024), Mendel in *Falsettos* (2023), the Doctor in *Tenderly*, *The Rosemary Clooney Musical* (2021), the title role in *Jesus Christ Superstar* (2013), Aaron in *First Date* (2017), or Eddie in the *Stardust* series.

Jae hee Kim (she/her) - *Costume Design*

Jae hee Kim is a Seattle-based costume designer, artist, and educator. This is her second production with Harlequin, having costume designed for *Romeo & Juliet* earlier this season. She has designed costumes for *Time Stands Still*, *Memories of a Forgotten Man*, *The Standby Lear*, and *Europe* for Thalia, *Guards at the Taj*, *Snowed In*, *Endless Shift* for ArtsWest, and *Macbeth* for Seattle Shakespeare Company. She was a draper at Seattle Rep and a lead draper at Seattle Opera. She has published articles at USITT and the Korean Society of Costume when she was full-time faculty. Her costumes have been exhibited at internationally recognized galleries. She received a Wearable Art grant from the University of Iowa Museum of Art, the KCACTF Meritorious Achievement Award, and the Kennedy Center's Summer Intensive in Design Collaboration Fellowship with workshops led by Ming, Cho Lee, and Constance Hoffman.

Mark Thomason (he/him) - *Lighting Design*

Mark is a local lighting designer based in Tacoma and teaches technical theatre and design at Tacoma School of the Arts and occasionally at the University of Puget Sound, having spent most of the last 20 years as a lighting designer, production manager, and technical director; he also works with Zombie Orpheus Entertainment and much of his film work can be seen at ZombieOrpheus.com. BA in Theatre Production from Bradley University. Previously at Harlequin Productions: 20 previous shows including most recently: *Sweeney Todd*, *The Complete Works of William Shakespeare (abridged)*, *Falsettos*, *Fun Home*, *Murder for Two*, *Until the Flood*, *Noises Off*, *A Doll's House*, *Dry Powder*, *The Art of Racing in the Rain*, *I Am My Own Wife*, *My Name is Rachel Corrie*, *First Date*, and *The Last Five Years*. Other recent designs include *Fairview* with Empathos Theatre Company, *Puget Sound Revels* at the Rialto Theatre, and *Into The Woods* with UPS Opera. Love to Gail and Gabe. thomasonproductions.com

Keith Jewell (they/them) - *Sound Design*

Sound is all around us, yet nearly always invisible. It contributes to a sense of place, sets mood, and provides valuable cues about the world we inhabit. Keith grew up on a diet of audio stories from NPR, ZBS, Jim Copp, Bergman and Proctor, and old-time radio. This led to a passion for using sound to tell stories. From a 1993 puppet show adaptation of *King Lear* in the Star Wars universe, through over a hundred and thirty other productions, Keith has had the pleasure of getting to work with the exceptional designers, actors, and directors here at Harlequin for nineteen seasons, as well as sixteen seasons at Saint Martin's University. You also may have seen their work in Ripley's "Believe It Or Not." Recent and favorite Sound Designer credits here include *Rent*, *Is This A Room*, *Sweeney Todd*, *Cabaret*, *Deathtrap*, *Hundred Days*, *Fun Home*, *Hedwig and the Angry Inch*, *Murder for Two*, and *August: Osage County*.

Gail Thomason (she/her) - *Properties Design*

This is Gail's fifth show with Harlequin, having previously designed properties for *POTUS* (2025), *The Highest Tide* (2020), *Man of La Mancha* (2018), and *Little Shop of Horrors* (2016). Gail has worked professionally for more than thirty years in a variety of theatrical roles in the greater Seattle area, most recently as Production Stage Manager for Puget Sound Revels and Production Manager for Tacoma Opera. She has created properties for Intiman, Seattle Rep, Civic Light Opera, Seattle Shakespeare and the Village Theatre among others. More recent properties work includes *Agamemnon* at Dukesbay Theatre, *My Name is Asher Lev* at Lakewood Playhouse and Theatre on the Square, and *The Rape of Lucretia*, *La Boheme*, and *Tosca* with Tacoma Opera.

** Scott Nolte is a member of the Stage Directors and Choreographers Society.

MURDER ON THE ORIENT EXPRESS

Luna McMeen (he/they)

- *Wig, Hair and Makeup Design*

This is Luna's first production with Harlequin and they are excited to be a part of this wonderful team! Luna is Costume, Hair, and Makeup designer working primarily in the Seattle area. Some design credits include: *Hotdish* with Ponyworld (Costumes, 2023) *Romeo and Juliet* with Theatre Battery (Costumes, Props, 2024), and *It's Always Patsy Cline* with Taproot Theatre (Wigs, 2025). Luna would like to thank their wonderful spouse Nay, their family, and Kilah Williams for helping me discover my love of working with wigs.

Marianna de Fazio (she/her) - *Dialect Coach*

Marianna coaches dialect at theaters around the Puget Sound, and has coached and performed in many here at Harlequin: *Pride & Prejudice* (Mrs Bennet/dialect), *The Art of Racing in the Rain* (Eve), *Present Laughter* (Daphne), *A Doll's House* (Kristine), and more recently, *Cabaret*, *Baskerville* and *A Christmas Carol* (dialects). Marianna also coaches accent modification, voice & speech, and presentation prep for corporate conferences and for individuals across professions. MFA: UW. www.mariannadefazio.com

Gina Salerno (she/her) - *Stage Manager*

Since 2005, Gina has worn many hats at Harlequin. Her favorite hats are those of Company Manager, Stage Manager, and Sound Designer. Some of Gina's favorite projects include *Romeo and Juliet* ('25), *Sweeney Todd*, *A Christmas Carol* ('21-25), *Pride and Prejudice*, *Time Stands Still*, *The 39 Steps*, *The Man of La Mancha* (Harlequin), *Border Songs* (St. Martin's University; Book-It), *Equivocation*, *Polaroid Stories* and *The Last Days of Judas Iscariot* (St. Martin's University). She thanks her incredible family at Harlequin for all their love and support, especially Celeste and Melanie. Special thanks to Andy and sweet Miss Sauce for giving up time with Mama so she can go out and do Real. Live. Theatre. I love you both!

Celeste Elaine (she/her) - *Assistant Stage Manager, Fight and Intimacy Consultant*

Murder on the Orient Express marks Celeste's tenth production with Harlequin. A multi-hyphenate theatre artist, her past productions here include *Deathtrap*, *Building Madness*, *Fun Home*, *Sovereignty*, *The Revolutionists*, *A Christmas Carol* (2022, 2023), *The Complete Works of William Shakespeare (abridged)* and, most recently, *Cabaret*. Elsewhere, her choreography has been seen at area theaters and colleges, and she occasionally enjoys acting as well. Other favorite works include *Steel Magnolias*, *Urinetown*, and *Into The Woods*. When not Stage Managing, Celeste spends her time enjoying matcha green tea and interior decorating her space.

IN THE GALLERY



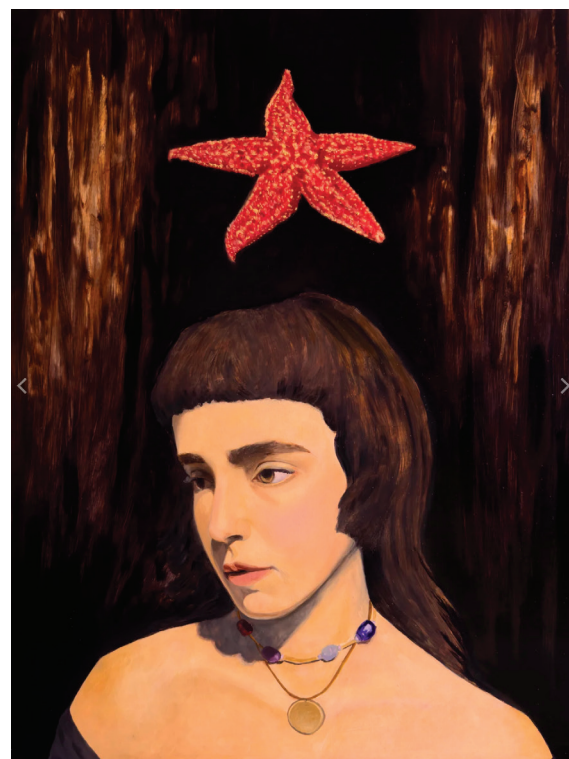
Featured Gallery Artist **DANNY GORDO**

Danny Gordo is a figurative painter, tattoo artist, musician, and founder of The Copper Wolf Tattoo Studio and Art Gallery based in Tumwater, WA. He holds a BFA in Illustration from the Rocky Mountain College of Art & Design, where he graduated Summa Cum Laude and is the 2025 Robert B. McMillen Foundation MAC Award winner. Using oil and graphite, Danny blends classical techniques with contemporary symbolism

to craft visually intricate and emotionally resonant images that invoke contemplation and reflection in viewers.

Beyond his studio practice, Danny is an active teacher and mentor. He currently works primarily with young artists in the South Puget Sound region, helping them strengthen both their craft and their creative perspective. His work has been shown throughout the Pacific Northwest down through California and reflects an ongoing commitment to honesty, inquiry, and the belief that art can offer a lasting inner dialogue.

View his portfolio at dannygordo.com, follow current projects on Instagram @cognitronic, or contact him at danny@thecopperwolf.com



Enjoy the best of PBS and more.
Anytime, anywhere!



FREE DOWNLOAD: [CASCADEPBS.ORG/APPS](https://cascadepbs.org/apps)



The "Nick on the Rocks" name is a registered trademark of and is used with permission of Central Washington University.



**Shanna
Paxton**
Photography

Specializing in events and portraits.

(360) 529 9332

Visit www.shannapaxton.co



DON'T LET UNWANTED GUESTS STEAL THE SPOTLIGHT

Rats, Mice, Spiders, Ants, Termites,
Stink Bugs, and More.
Providing both Commercial &
Residential Services



(360) 456-4999



info@VenablesPest.com



www.VenablesPest.com



Tumwater, WA



VenablesPest
MANAGEMENT



OLYMPIA COFFEE

As a Certified B Corporation and Living Wage employer, Olympia Coffee is committed to improving lives—from our Fair for All sourcing standards to supporting the arts here at home.

We're proud to sponsor Harlequin Theater and the creativity that strengthens our community.

Northwesterly
 ROAST - DARK - RICH
 Please enjoy this specialty coffee with a glass of water or milk.
 Roasted: Medium - Dark
 NET WT. 12 OZ (340g)

Certified B Corporation
 Fair FOR ALL



OLYMPIA SYMPHONY ORCHESTRA
 Alexandra Arrieche Music Director

PRESENTS
IN MOTION
 2025-26 Season

MOVE IT Oct. 19	From dance-inspired compositions to works that stir the soul, you will experience a symphony of motion like never before.
LISTEN Nov. 16	
SEE Dec. 7	
DANCE Dec. 31	
CELEBRATE Feb. 7	
TRANSFORM March 15	
MOVE April 19	

Artists, repertoire and dates subject to change **OLYMPIASYMPHONY.ORG**



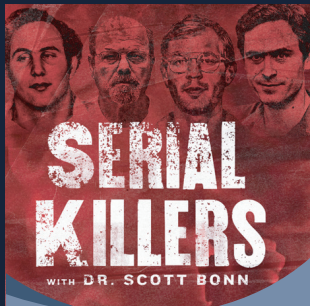
**CELEBRATING 100 YEARS
 SERVING OUR COMMUNITY
 1922-2022**

KGY
 MEDIA GROUP
 RADIO & DIGITAL
 MARKETING SOLUTIONS

Olympia's **KGY 95.3**


96.9 KAYO
 Country

KGYMEDIAGROUP.COM



SERIAL KILLERS
WITH DR. SCOTT BONN

SERIAL KILLERS
WITH DR. SCOTT BONN
THURSDAY OCT 30 7:30PM



CHRIS PERONDI'S STUNT DOG EXPERIENCE

SATURDAY NOV 1 2:00PM
SATURDAY NOV 1 6:00PM



SEATTLE INTERNATIONAL COMEDY COMPETITION

THURSDAY NOV 20 7:30PM




REDUCED SHAKESPEARE COMPANY'S THE ULTIMATE CHRISTMAS SHOW (ABRIDGED)

THURSDAY DEC 4 7:00PM



COLBIE CAILLAT AND GAVIN DEGRAW

CHRISTMAS TOUR 2025
FRIDAY DEC 5 7:30PM



STOP MAKING SENSE

LIVE EVENT HOSTED BY JERRY HARRISON
FRIDAY JAN 16 7:30PM



THE CENTER

TICKETS ARE NOW ON SALE!

CHECK OUT OUR WEBSITE TO SEE THE FULL SEASON!



BOX OFFICE: (360) 753-8586 • WASHINGTONCENTER.ORG • 512 WASHINGTON ST. SE • OLYMPIA, WA 98501

DOING GOOD IS PART OF OUR DNA.

Together with our employees, Heritage Bank supports hundreds of local nonprofit organizations, with donations of time, resources and money, while leveraging our banking expertise to support affordable housing and financial literacy projects that strengthen our communities.

Because we know when neighbors help neighbors, the whole community benefits. And that's true prosperity.

Learn more and read our annual Community Impact Report at heritagebanknw.com/community.



Heritage
BANK

 Equal Housing Lender | Member FDIC



CAPITOL CITY PRESS

*A dramatic supporter of
Harlequin Productions!*

PRINT | MAIL | PACKAGING | WIDE FORMAT

www.capitolcitypress.com + (888) 943.3556

print positive



Harlequin seeks to invigorate,
educate, and empower our
community and all people to feel
more, think more, play more,
and judge less through the
mirror of **Real. Live. Theatre.**

Photo by Shanna Paxton Photography

HARLEQUIN

THE STATE THEATER
202 4th Avenue E, Olympia,
WA 98501

Box Office 360 786 0151
Admin. Office 360 705 3250
harlequinproductions.org

ADMINISTRATIVE STAFF

Aaron Lamb Producing Artistic Director
Joe Hyer Director of Finance
and Human Resources
Olivia Burlingame Director of Operations
and Patron Services
Helen Harvester Marketing and
Communications Director
Brennan Tucker..... Development Manager
Gautam Dutta Front of House Manager
Moni Shada Box Office Associate
Jim Kainber Capital Campaign Manager
Richard Wheeler Environmental Services
John Serembe Graphic Designer
Lynette Charters..... Gallery Curator

PRODUCTION STAFF

Bruce Haasl Technical Director
Gerald B. Browning Director of Production
Gina Salerno Company Manager
Melanie Ransom Costume Department Manager
Olivia Burlingame Lighting Supervisor
Keith Jewell Sound Supervisor
Lee W. Lynch Scenic Charge Artist
Rob Taylor..... Master Electrician
Ethan Bujeaud Master Carpenter
Ed Salerno Carpenter

BOARD OF DIRECTORS

Rene Radcliff Sinclair President
Charli Terminelli..... Vice President
Si Sarton..... Secretary
Eric Belgau, Geoff Crooks, Ben Cushman, Laurie Dolan,
Kate Faro, Eleise Moore, Janet Mueller,
Tiffany Munoz, James D. Reddick..... Members

A Big *Thank You* to our
Pay-What-You-Choose Sponsors!



Harlequin Productions is a member of Theatre Communications Group (TCG),
Thurston County Visitor and Convention Bureau, Theatre Puget Sound (TPS), Washington State Arts Alliance,
Thurston County Chamber, Yelm Area Chamber of Commerce, Olympia Downtown Association,
Economic Development Council of Thurston County
and South Sound Partners for Philanthropy.

STATE THEATER INFORMATION

Cameras & Recording Devices

The use of cameras (with or without flash) or other recording devices is prohibited.

Concessions

Food is not permitted in the seating area. Water and beverages in plastic or paper cups are allowed. Please unwrap cough drops prior to the start of the performance.

Silence Your Cell Phone

In consideration of those around you, please silence all electronic devices and refrain from text messaging or utilizing your devices during the performance.

Assisted Listening Devices

Patrons with hearing disabilities may see the House Manager prior to the performance to obtain an enhanced hearing device.

Special Seating Needs

If you have a wheelchair, walker, or other special seating needs, please advise the Box Office in advance so we may accommodate you comfortably.

Friends & Family

If you have a friend or family member in the cast with whom you wish to visit, please wait in the lobby following the performance where your person will find you. Notes, flowers, gifts and messages may be sent backstage through the House Manager.

Children & Youth

Please help us avoid disruptions that may affect others' enjoyment and the actors' performance. Disruptive children should be escorted to the lobby. No babes in arms, please. Some productions may not be appropriate for younger children, though discretion is left to the parent. Please call the Box Office with any questions concerning a play's content.

Late Seating

Latecomers will be seated in the Gallery at the back of the house, which provides a good vantage point with a minimum of disturbance. An usher will direct you to your seat at an appropriate break or at intermission. If you leave the house during the performance and return, please watch from the Gallery until an usher can direct you to your seat.

THE VIDEOTAPING OR MAKING OF ELECTRONIC OR OTHER AUDIO AND/OR VISUAL RECORDINGS OF THIS PRODUCTION AND DISTRIBUTING RECORDINGS OR STREAMS IN ANY MEDIUM, INCLUDING THE INTERNET, IS STRICTLY PROHIBITED, A VIOLATION OF THE AUTHOR(S)'S RIGHTS AND ACTIONABLE UNDER UNITED STATES COPYRIGHT LAW. FOR MORE INFORMATION, PLEASE VISIT:

<https://concordtheatricals.com/resources/protecting-artists>



Make resilience your model.

Our professional financial planners have helped all kinds of business owners get over hurdles. See how our experience can help you do the same.



Navigate Financial 360.628.8175
yourjourney@navigatefinancialnw.com
www.navigatefinancialnw.com
3663 College St SE Suite B
Lacey, WA 98503

Securities and advisory services offered through Commonwealth Financial Network, Member FINRA/SIPC, a Registered Investment Adviser.
Financial planning services offered by Navigate Financial, a WA Registered Investment Adviser, are separate and unrelated to Commonwealth.
Fixed insurance products and services are separate from and not offered through Commonwealth Financial Network

The logo for South Sound Psychotherapy features a stylized silhouette of a mountain range above the text "SOUTH SOUND" in a large, bold, sans-serif font. Below this, in a smaller font, is the word "Psychotherapy".

SOUTH SOUND
Psychotherapy

supports
Real. Live. Theater.

Peter J. Sanderson
LMFT, MHP, CMHS

Individual therapy with adults and adolescents

Olympia: (360) 786-9499 • Shelton: (360) 427-0853

Contact: peter@southsoundpsychotherapy.com

INDIVIDUAL CONTRIBUTORS (September 6, 2024 to September 6, 2025)

Artistic Director's Circle

From \$10,000

Fred and Karey Griesman
Mary Ellen
and Greg Psaltis ☺
James and Sharon Reddick
Stuart and Carol Vannerson

Producer's Circle

From \$5,000

Carlson Family
Lee Ann Gekas
and Michael Greenstreet
Beth Morrison
and Geoffrey Crooks
Sallie and John Parr
Gloria and Skip Strait

Artist's Circle

From \$2,500

Anonymous
John Carmichael
and Michael Partlow
Mike Kretzler
and Judy Covell ☺
Don Law
Janet Mueller
and Gerald Magnoni ☺
George Sharp
Paul Shepherd
Renee Sinclair
J Mark and Kathrynne Wagner

Benefactor

From \$1,000

Thomsen Abbott
and Teresa Scharff
Sally Alhadeff
and Bob Sundstrom
Joe
and Kento Azemgami-Hyer
Kristine and David Bartruff
Daniel Berschauer
and Phyllis Edwards
Rhoda Besecker ☺
Dick and Renee Binns
Alex Broman
and Mary Winkler
Larry and Donna Brooke ☺
Susan Bryant
and Jim Kruidenier
Carolyn Burreson
and Robert Burreson
Pat and Warren Carlson ☺
William and Joan Cullen

Kevin Feely
Jay Goldstein
and Jill Rosenkrantz
Ann Green
Jean Gunnarson
Erik and Laura Hanson
Judith
and Steve Harvester ☺
Hank and Helen Henry
Jim Kainber ☺
Sandra and Ken Kelnhofer
Frank Kersul
Katherine and Michael Krysty
Aaron Lamb
and Helen Harvester ☺
Gordon and Nancy Lamb ☺
Barbara Lane
Diana Larsen-Mills
and Kenneth Guza
Vicki Lovegren ☺
Patti and Victor Moore ☺
Anonymous
Diana and Stephen Purvine ☺
Si Sarton
Oscar and Barbara Soule
Charli Terminelli
Melanie Tyler
and Todd Stamm
Karen Valenzuela
Robert Weber
Randall and Debra Weitzel ☺
Mary Wilkinson
and Joe Ford ☺
Bonnie Wood

Investor

\$25/mo. or \$300/yr.

Melissa Allen
Pam and Alan Anderson ☺
Anonymous
Thomas Badger
and Wendy Gerstel
Tom Badger
Katherine Baros Friedt
and Paul Seabert ☺
Deborah Bauer
and David M. Johnson
Pavlina Bevan
Gerald Browning
Mary Campbell
Ingrid Carson ☺
Lanette Corzine
Rachel Crum
Ben and Deborah Cushman ☺
Trina and Gary Delaney
Sammie Downing ☺
Beth Dubey ☺

Sue Dubuisson
Deborah Dunlap ☺
Debbie Ehri ☺
Paul and Mary Anne Enns ☺
Martin Eussen
Kate Faro ☺
Kate Feeley Lynch
Mary Fleckenstein
Desiree Freeland ☺
Barbara Gibson
and Carol McKinley
David Giglio ☺
Tracey and Tom Glembin ☺
Marjorie and John Gray ☺
Kristopher Grinnell ☺
Christy Gustafson ☺
Debbie Hall and Ron Smith
Kathryn Hamilton-Wang
and Steve Wang
Allison Hanna
and Stephen Christensen ☺
Marlyce and Frank Hansen
Gillian Haws
David and Dione Hayes
Kathryn Hegtvedt
and Thomas Rozwod ☺
Kathryn
and Brandon Hennegan ☺
Sterling Ingram ☺
Nancy and Tom Inui
Cynthia Ivey ☺
Bob and Bonnie Jacobs
Keith Jewell and Sara
Schwartz Jewell ☺
Marlisa Johnson ☺
John Joseph ☺
Ericka Kaplan
and Stephen Moore ☺
Marie Kirk ☺
Paul Knox
and Sara Holt-Knox ☺
Helen and John Kramer ☺
Barbara and Leif Lantz
Collum and Martha Liska
Linda Luebcke
Pamela Maciel ☺
Gayle and R. Bruce Magee
Brian Markham
Lizz Maunz and Art Simpson
Fred McDowell
Janet McLane ☺
Pamela Meredith ☺
Ivri Messinger
Tracy Metrovich
Ushole Monjok ☺
Catherine Moore ☺
Edward Morgan ☺

Cara Myhre ☺
David and Celia Nightingale ☺
David and Jane Nowitz
Meredith and Tom O'Kelley ☺
Linda and Burke O'Leary
Wayne and Betsy Olsen
Lisa Parshley
Brenda Paull ☺
Susan Perkins ☺
Drew and Kylie Phillips
Cleveland and Marty Pinnix
Tom Price ☺
Barbara Putnam ☺
Kim and Cindi Putnam
Anne and Robert Radford ☺
Melanie
and Timothy Ransom ☺
Bridget Ray ☺
Erin Reetz
Laurie Rogers
and Rich Gailey ☺
Henry and Leslie Romer
Sophia Rychener ☺
Peter
and Cynthia Sanderson ☺
Mary Schaefer
Amanda Schaffer
Vernene Scheurer
Laurel Smith
Mary Stanton-Anderson
and Roger Clark ☺
Michael Stapleton
and Amanda Sue Rudisill
Stacy Steck ☺
Dawn Stremel
and Ruth Conn ☺
Bruce and Olga Sutherland ☺
Janet Swanson
and Gary Minns ☺
Helen and Robert Tafejian
Priscilla and Thomas Terry
Dan and Cindy Tufford ☺
Nancy and Michael Walsh ☺
Cynthia Wilson
and Bill Graeber ☺
Donald and Judy Wilson ☺
Ellen and Carl Wolfhagen ☺

Partner

\$10/mo. or \$100/yr.

Matt Acker
Edward Adelson
Elizabeth Alberti and Tyra
Lindquist
Christine Allen
Christine and Mark Allen ☺

INDIVIDUAL CONTRIBUTORS (September 6, 2024 to September 6, 2025)

Donald Arlow
 Alexandra Arrieche
 Marrienne Backous
 Janet Ball
 and David Monthie ☺
 Leila Bardsley ☺
 Jill Barnes
 Mary Barrett
 Richard
 and Mary Bartholomew
 Lois Beck ☺
 Bonnie Benard ☺
 Kate Benkert
 Marilyn and George Berko ☺
 Michael Bezdziecki ☺
 Joe Blotner
 Betty Bookheim
 Sharon Boyle-Woods
 Mary Bradley
 Sue Bredensteiner
 Peggy Brink
 Tom Bristow ☺
 Catherine Brooke
 Nancy Buehler
 Rebecca Buettner ☺
 AnnieLaurie Burke ☺
 Nicole and Jim Butigan
 Kathleen Callison
 Linda Canfield ☺
 Beth and Ken Capek ☺
 Linda Carbonneau
 and Jim Wussler
 Chris and Geri Carlson ☺
 Tim Cashin
 Margaret Champan
 Arun Chandra
 Edsonya Charles ☺
 Charles Chester
 Donald Chinn
 Mary Chmura
 Fran Clifton
 Donald and MaryBeth Cline
 Aspen Clontz ☺
 Cecelia Clynch and Jim Albert
 Bettie Cochran
 Diane and Rick Cooper
 Tom Craven ☺
 Diane Dakin
 Kate Danley
 Mouer De'Eldred ☺
 Daniel Delaney ☺
 Cameron and Kay Dightman
 Arthur and Laurie Dolan
 Deb Dunham
 Diana Ehri ☺
 Lynda Eich

Audrey Eide
 Leslie Emerick ☺
 Tammie and Gordon Ensign
 Candace Espeseth ☺
 Signe Feeney
 and William Rozon
 Leah Fenner
 Susan Finlay ☺
 Mary Ann Firmin
 Maureen Fitzgerald
 and James Krupke
 Steinar Flaatrud
 and Kathy Spieles-Flaatrud
 Lea Flanagan ☺
 Karen Fraser
 and Hiromi Takeno
 Kim Fraser ☺
 Rachel Friedman
 and Laurance Geri
 Andy Garness
 and Gina Salerno
 Tara Geraci ☺
 Michael Glenda
 and Rooney Schwarz
 Jeffery Goltz
 and Mary Welsh
 Andrew Gordon ☺
 Gail Gosney Wrede
 and Fritz Wrede ☺
 Michael Gray
 and Jackie Nordquist Gray ☺
 Glenys Groome
 Janelle Guthrie ☺
 Elizabeth and Kevan Hagen ☺
 Janis Hall
 and Donald Crowley
 Michael Hankins
 Alan Hardcastle
 Edie Harding and Dave Smith
 Sheila Harper
 Rachel Hatfield ☺
 Debora Hathaway
 Chris Hawkins
 Timothy Hawthorne
 Alison Hendricks
 Betsy Hildreth ☺
 Kelsey Hodgkin ☺
 Cathy Hodgson ☺
 Jiana Hook
 Marcia Hopkins ☺
 John and Cindy Hough
 Kathleen Houston
 James Hovis
 Sharelle Howard
 Debra Hultgren
 Nelson Hunt
 Richard and Dianne Hurst ☺
 Veronica and Ross Jarvis

Derek Jenkins
 Melissa Johnson ☺
 Leslie Keller
 Dennis
 and Stephanie Kellogg ☺
 Kelly and Kevin Kerr ☺
 Bob Kirby
 and Teri Bevelacqua
 Greg Kirkpatrick
 and Joy Scholz ☺
 Evyn Knolle ☺
 Candie Kohler ☺
 Amanda Kuehn ☺
 Debbie Kushibab
 Kai Labuda ☺
 George and Linda Lamb
 Michael Lange
 and Valerie Vance
 Jamie Langford-Herbig ☺
 Nancy LaPointe
 Jenine Laughead
 Ronald Lavigne
 and Lisa Vatske ☺
 Xander Layden
 Karen Lund
 Paul and Robyn Malmberg ☺
 Thom Mayes
 Shawn McDonald ☺
 Michael Middleton
 Shauna Mitchell & Tacoma's
 Bluemouseketeers ☺
 Michael and Kathy Moore
 Paula and Bryon Moore
 Michelle Morris ☺
 Tanya Mote
 Roxanne Nelson
 Kris Norelius and Brian Faller
 Richard O'Grady ☺
 Irina
 and Maria Osechinskaya ☺
 Cheryl Parker ☺
 Jacob Peetz
 Ryan Perkins
 Kathy Perry ☺
 Nancy and Corinne Peterson
 Britt Pomush ☺
 Cynthia and David Pratt
 Lawrence Richards
 Bruce Ritzen
 David Robinson ☺
 Rebel Romero ☺
 John Rosenberg
 and Nancy Faaren
 Christopher Rozwod
 Alan and Lynn Ruger ☺
 Joanne Samaniego
 Ali Schaafsma

Renée
 Schelper-Zimmerman ☺
 Charles and Joan Schooler
 Dan and Carrie Seachord ☺
 J'keren Sears ☺
 David Sederberg
 Stephanie Seitz ☺
 John Selby
 John Serembe
 and Lynette Charters ☺
 Matt Shimkus and
 Emilie Rommel-Shimkus ☺
 Dawn Shuford-Pavlich ☺
 Micki Simon
 Paul Snyder
 Anna Sommers ☺
 Heather and Eric Sparkman ☺
 Sandra and Mark Spee
 Justin Speer ☺
 Cherie and Gary Stedman ☺
 Darlene Steinbach
 Scott Steinbach ☺
 Scott Steltzner
 Ann Stephenson ☺
 Courtney Summers ☺
 Gerald Suzawith
 and Kristin Blalack
 William Moore
 and Kathe Taylor
 Caralyan Tebow ☺
 Evette Temple ☺
 Jim This ☺
 Elizabeth Thissell ☺
 Jennifer
 and Chris Thompson ☺
 Steve Tillman
 Randall Todd ☺
 Brennan Tucker ☺
 Geraldine Vander Haegen
 Sue Vickerman
 Jeff Wagner ☺
 Julie Wagner
 Marilee Warren
 Alice and George Watland
 Danielle Welliever
 Leah Wilson
 Aidan Yescas
 Richard Yescas
 James and Linda Young
 Kim Young
 Peggy Zimmerman

CORPORATE & FOUNDATION CONTRIBUTORS (September 6, 2024 to September 6, 2025)

Alhadeff Family
Charitable Fund
America Online Giving
ArtsFund
Deena McClain
Living Trust
Kroger - Fred Meyer
Rebate Program

M J Murdock
Charitable Trust
PayPal Giving Fund
Puget Sound Energy
Republic Services
Richard P. Hoffman Trust
Shubert Foundation

The Community Foundation
of South Puget Sound's
Vannerson Family Advised
Fund
The Norcliffe Foundation
Tom Badger & Wendy
Gerstel Giving Fund

Washington State
Arts Commission
Washington State
Combined Fund Drive
WA State Department
of Commerce

TRUSTED BUSINESS PARTNERS AND UNDERWRITERS

Bite Me Catering PNW
Captain Little
Compass Rose
Capital Heating and Cooling
Capitol City Press
The Community Foundation
Of South Puget Sound
Heritage Bank
KGY 95.3

KNKX 88.5
Mighty Tripod
Navigate Financial
Nicholson and Associates
Insurance LLC
Nicole's Bar
Octapas Cafe & Restaurant
OlyArts
Olympia Downtown
Association

Olympia Federal Savings
PARC Foundation
Roxy 94.5
Shanna Paxton Photography
Stormans Inc.
Swing Wine Bar And Cafe
The Community Foundation
Of South Puget Sound

The Washington Center
for the Performing Arts
Thurston County Chamber
of Commerce
TVW
Uptown Grill
Venables Pest
Management
Washington Hospitality
Association



BALLET NORTHWEST'S
55TH ANNIVERSARY CELEBRATION
FEATURING CARNIVAL OF THE ANIMALS

OCTOBER 11, 2025
at the Washington Center



BALLET NORTHWEST'S
THE NUTCRACKER

DECEMBER 12-21, 2025
at the Washington Center

BALLET NORTHWEST

Olympia's Dance Company since 1970
Artistic Directors: Ken & Josie Johnson
BALLETNORTHWEST.ORG

Tickets: [WASHINGTONCENTER.ORG/BNW](https://www.washingtoncenter.org/bnw) | 360-753-8586

JOIN US AND RECEIVE MEMBER BENEFITS

Include a tax-deductible donation with your subscription
and help Harlequin create Real. Live. Theatre. for years to come.
As a thank you, you'll receive the exciting benefits below.

In addition, **all Donors** at the Partner level and above receive 25% off concessions for the year.

	Partner \$10/mo. or \$100/yr	Investor \$25/mo. or \$300/yr	Benefactor \$1,000	Artist's Circle \$2,500	Producer's Circle \$5,000	Artistic Director's Circle From \$10,000
Donor pricing at concessions	✓	✓	✓	✓	✓	Artistic Director's Circle benefits are highly personalized. If you are interested in giving at this level, please contact Brennan Tucker at: brennan @harlequinproductions.org
Name in program and on website	✓	✓	✓	✓	✓	
Invite for two to a technical dress rehearsal		✓	✓	✓	✓	
Invite for two to attend an artistic director's brunch			✓	✓	✓	
Complimentary tickets to the 2025 Gala				✓	✓	
Invite for two to a behind-the-scenes Production Tour					✓	

MUTUAL MEANS MORE.

PHILANTHROPY



Extraordinary giving for local impact.

ACCOUNTABILITY



We answer to you, not shareholders.

100% LOCAL

Relationships with hometown care & insight.



OlyFed

BANKING
THAT'S
MUTUAL

olyfed.com

A vibrant arts culture
 attracts talent and
 investment and supports
 a **prosperous community.**

In its 150th year, the Thurston County Chamber
 is proud to support Harlequin Productions.



*Building
Prosperity
Since 1874*



Family owned and operated for three generations, Capital Heating, Cooling, Plumbing & Electric is run by the Schmidtke brothers. Pictured above are Bill, Chuck and Dean, who are proud to carry on the family tradition of customer satisfaction and quality service.

NOW OFFERING HEATING, COOLING, PLUMBING & ELECTRIC HOME SERVICES

In addition to our heating, cooling, and sheet metal services, we now offer full-service residential and commercial plumbing products and electrical services in the Southsound area.



Scan to Schedule or for Information

Call or Text 360.491.7450 or Visit ComfortSince1937.com

Supporting the Arts and Our Community for Four Generations



HEATING ■ COOLING ■ PLUMBING ■ ELECTRIC

DELIVERING COMFORT SINCE 1937

License: #CAPITHC9483N3

