

MILLION DOLLAR QUARTET

ELVIS
PRESLEY
JERRY LEE
LEWIS
CARL
PERKINS
JOHNNY
CASH



Book by COLIN ESCOTT and FLOYD MUTRUX Original Concept and Direction by FLOYD MUTRUX
Inspired by ELVIS PRESLEY, JOHNNY CASH, JERRY LEE LEWIS, and CARL PERKINS
Directed by EMILY A. ROLLIE

June 19 - July 26, 2026

HARLEQUIN

Keeping Community in Tune

THE PARC FOUNDATION IS PROUD TO SUPPORT THE ARTS, CULTURE, AND COMMUNITY EXPERIENCE THAT BRING THURSTON COUNTY TOGETHER.



Tonight's performance reminds us that music, storytelling, and shared experiences have the power to connect generations and strengthen community.

At the **PARC Foundation of Thurston County**, we invest in programs and partnerships that expand access to parks, arts, recreation, and culture throughout our region.

Through partnerships with **Olympia, Lacey, Tumwater, Yelm, and Tenino**, the PARC Foundation helps remove barriers so more individuals and families can experience the joy of community - from live theater to youth recreation and cultural events.

Because everyone deserves a chance to be part of the show.

YOUR SUPPORT MAKES A DIFFERENCE:



Expanding access to arts and cultural programming



Funding recreation and wellness opportunities



Providing scholarships



Strengthening community partnerships



JOIN US IN BUILDING A MORE CONNECTED, CREATIVE, AND INCLUSIVE COMMUNITY.

Donate Today!
[PARCFoundation.org](https://www.PARCFoundation.org)



PARC
FOUNDATION
of Thurston County

Connecting people.
Investing in community.
Inspiring access for all.

MILLION DOLLAR QUARTET

Book by COLIN ESCOTT and FLOYD MUTRUX Original Concept and Direction by FLOYD MUTRUX
 Inspired by ELVIS PRESLEY, JOHNNY CASH, JERRY LEE LEWIS, and CARL PERKINS

CAST

Jerry Lee Lewis..... Wyatt Brownell
 Carl PerkinsMaverick McCarl
 Johnny Cash.....Nathan Roberts
 Elvis Presley Ben Bailey
 Sam Phillips Casey Raiha
 Dyanne..... Becca Bailey
 Brother Jay Nick Rawson
 Fluke Will Madison
 Substitute Brother Jay Tommy Hawthorne

TIME & PLACE

December 4, 1956. Sun Studios, Memphis Tennessee

RUN TIME

90 minutes with no intermission

SPECIAL THANKS

To Volunteer Carpenter Rich Kalman, Andy Garness,
 Nick Rawson and Ed Salerno

CREATIVE TEAM

Director Emily A. Rollie
 Musical Director Stephanie Layton
 Choreographer..... Jessica Low
 Scenic & Lighting Design Christina Barrigan
 Costume Design Jason Kramer
 Sound Design Keith Jewell
 Properties Design..... Dan Wolff
 Hair/Wig/Makeup Design..... Bridget House
 Dialect Coach Grace Helmcke

PRODUCTION TEAM

Stage Manager..... Celeste Elaine
 Assistant Stage Manager Tommy McGee
 Light/Sound Board Operator Logan Simpson
 Spot Operator 1..... Blake Becker
 Spot Operator 2..... Bella Peregrino
 Sound Engineer Michael Gray
 Properties Master..... Daniel Wolff
 Wig Maintenance..... Bridget House

All video and/or audio recording of this production is strictly prohibited.

Originally developed and produced by Relevant Theatricals, John Cossette Productions and Northern Lights, Inc. at the Goodman Theatre, Robert Falls, Artistic Director - Roche Shulfer, Executive Director and transferred to The Apollo Theatre, Chicago, IL, 2008

Produced by the Village Theatre, Issaquah, Washington, Robb Hunt, Producer - Steve Tompkins, Artistic Director, 2007 and Seaside Music Theater, Daytona Beach, FL, Tippin Davidson, Producer - Lester Malizia, Artistic Director, 2006

MILLION DOLLAR QUARTET The Musical is presented through special arrangement with and all authorized performance materials are supplied by Theatrical Rights Worldwide 1180 Avenue of the Americas, Suite 640, New York, NY 10036. www.theatricalrights.com



MUSICAL NUMBERS

“Blue Suede Shoes”

(Music by Carl L. Perkins; lyrics by Carl L. Perkins) © MPL Music Publishing Inc. All rights reserved. Used by permission of Wren Music Co., o/b/o Carl Perkins Music Inc.

“Real Wild Child”

(Music by John O’Keefe, John Greenan and Dave Owens; lyrics by John O’Keefe, John Greenan and Dave Owens) (MPL Music Publishing Inc. All rights reserved. Used by permission of Wren Music Co.

“Matchbox”

(Music by Carl L. Perkins; lyrics by Carl L. Perkins) © MPL Music Publishing Inc. All rights reserved. Used by permission of Wren Music Co. o/b/o Carl Perkins Music Inc.

“Who Do You Love?”

(Music by Ellas McDaniel; lyrics by Ellas McDaniel) © ARC Music Corp. All rights reserved. Used by permission.

“Folsom Prison Blues”

(Music by John R. Cash; lyrics by John R. Cash) Published by House of Cash, Inc. Administered by Bug Music Inc All rights reserved. Used by permission.

“Fever”

(Music by Eddie Cooley and Johnny Davenport; lyrics by Eddie Cooley and Johnny Davenport) © Carlin America Music/Windswept Pacific Music Publishing. Published by Fort Knox Music, Inc. All rights reserved. Used by permission.

“Memories Are Made of This”

(Music by Terry Gilkyson, Richard Dehr and Frank Miller; lyrics by Terry Gilkyson, Richard Dehr and Frank Miller) © EMI Blackwood Music, Inc. (BMI) All rights reserved. Used by permission.

“That’s All Right”

(Music by Arthur Crudup; lyrics by Arthur Crudup) © 1947 (renewed). Unichappell Music Inc. (BMI) and Crudup Music (BMI). All rights administered by Unichappell Music Inc. All rights reserved. Used by permission.

“Brown Eyed Handsome Man”

(Music by Chuck Berry; lyrics by Chuck Berry) © Arc Music Corp. All rights reserved. Used by permission.

“Down by the Riverside”

(Traditional; arranged by Chuck Mead), © Zoilink Music. All rights administered by Coburn Music. All rights reserved. Used by permission.

“Sixteen Tons”

(Music by Merle Travis; lyrics by Merle Travis) © Merle’s Girls Music. All rights reserved. Used by permission.

“My Babe”

(Music by Willie Dixon; lyrics by Willie Dixon) © Bug Music, Inc. o/b/o Hoochie Coochie Music (BMI). All rights reserved. Used by permission.

“Long Tall Sally”

(Music by Robert Blackwell, Enotris Johnson and Richard Penniman; lyrics by Robert Blackwell, Enotris Johnson and Richard Penniman) © Sony/ATV Music Publishing LLC. All rights reserved. Used by permission.

“Peace in the Valley”

(Music by Thomas A. Dorsey; lyrics by Thomas A. Dorsey) © (renewed) 1939 Warner-Tamerlane Publishing Corp (BMI). All rights reserved. Used by permission.

“I Walk the Line”

(Music by John R. Cash; lyrics by John R. Cash) Published by House of Cash, Inc. Administered by Bug Music Inc. All rights reserved. Used by permission.

“I Hear You Knocking”

(Music by Dave Bartholomew and Pearl King; lyrics by Dave Bartholomew and Pearl King) © EMI Unart Catalog Inc. All rights reserved. Used by permission.

“Party”

(Music by Jessie Mae Robinson; lyrics by Jessie Mae Robinson) © MPL Music Publishing Inc. All rights reserved. Used by permission.

“Great Balls of Fire”

(Music by Otis Blackwell and Jack Hammer; lyrics by Otis Blackwell and Jack Hammer) © 1957 (renewed), Unichappell Music Inc. (BMI), Mijac Music (BMI), Chappell & Co., Inc. (ASCAP) and Mystical Light Music (ASCAP). All rights reserved on behalf of itself and Mijac Music, administered by Unichappell Music Inc. All rights reserved on behalf of itself and Mystical Light Music, administered by Chappell & Co., Inc. All rights reserved. Used by permission.

“Down by the Riverside” (Reprise)

“Hound Dog”

(Music by Jerry Leiber and Mike Stoller; lyrics by Jerry Leiber and Mike Stoller) Published by Sony/ATV Songs LLC. Copyright 1953 Sony/ATV Music Publishing LLC. All rights administered by Sony/ATV Music Publishing LLC, 8 Music Square West, Nashville TN 37203. All rights reserved. Used by permission.

“Ghost Riders”

(Music by Stan Jones; lyrics by Stan Jones) © MPL Music Publishing Inc. All rights reserved. Used by permission Edwin H. Morris & Company.

“See You Later Alligator”

(Music by Robert Guidry; lyrics by Robert Guidry) © Arc Music Corp. All rights reserved. Used by permission.

“Whole Lotta Shakin’ Goin’ On”

(Music by Curly Williams; lyrics by Curly Williams) © 1997 N’Mani Entertainment Co. (ASCAP). All rights reserved. Used by permission.



Told through the perspective of visionary music producer and founder of Sun Records, Sam Phillips, *Million Dollar Quartet* captures the essence, ethos, and veritable magic of a singular day in history: December 4, 1956. On that Tuesday afternoon, Elvis Presley, Jerry Lee Lewis, Johnny Cash, and Carl Perkins – each of whom had and would shape the sound of American popular music – unexpectedly came together at Sun Studio in Memphis, Tennessee.

This production explores not only the music of a generation, but the spirit of reinvention that defined it. These artists blurred boundaries between gospel, country, rhythm and blues, and rock and roll at a time when America itself was wrestling with questions of identity and change. Their music crossed cultural and social lines, challenged expectations, and gave voice to a new generation eager to be heard.

What moves me most about this story is not just the music – though the music *is* extraordinary – but the humanity within it. We see these artists in their youth, each facing a crossroad in their careers. As such, we

see their music *and* humanity as they wrestle with fear, ambition, ego, faith, loneliness, joy, and the desperate hope that what they are creating matters.

As a director, I am drawn to stories about ensemble and characters facing the potential of transformation, moments when they do not yet fully know who they will become but have the sense that everything is about to change. *Million Dollar Quartet* captures exactly that feeling – a powerful sense of potential and possibility. The show reminds us that history is often made in spontaneous moments of risk and bold creativity – and very often those moments are made more profound when shared in community with others.

Ultimately, this production celebrates the connective power of live music. There is something uniquely joyful about witnessing performers create music together in real time: listening, responding, harmonizing, and pushing one another toward something greater. While this story may be rooted in history, my hope is that it also feels deeply alive, fueled by the energy and electricity of incredibly talented artists discovering themselves and connecting with each other in real time. An energy that offers a glimpse of the humanity and joy that comes from creating together.

– **Director Emily A. Rollie, PhD**



Make resilience your model.

Our professional financial planners have helped all kinds of business owners get over hurdles. See how our experience can help you do the same.

Navigate Financial

360.628.8175

yourjourney@navigatefinancialnw.com

www.navigatefinancialnw.com

3663 College St SE Suite B

Lacey, WA 98503



NAVIGATE FINANCIAL
Charting Your Journey

Enjoy the best of PBS and more.
Anytime, anywhere!



CASCADE  PBS

FREE DOWNLOAD: [CASCADEPBS.ORG/APPS](https://cascadepbs.org/apps)



The "Nick on the Rocks" name is a registered trademark of and is used with permission of Central Washington University.

ABOUT THE CREATORS



Born in England, Colin Escott lives near Nashville, Tennessee. He is the author of *Good Rockin' Tonight: Sun Records and the Birth of Rock 'n' Roll*, the first in-depth account of the Sun Records story. His book *Hank Williams – The Biography* has been adapted into the movie

I Saw the Light, starring Tom Hiddleston and Elizabeth Olsen. His multi-CD box set, *The Complete Hank Williams*, won a Grammy, and another of his productions, *B.B. King – King of the Blues*, was nominated for a Grammy.

Million Dollar Quartet received three Tony nominations, including Best Book and Best Musical. Escott was part of the writing/producing team adapting the show for CMT/Viacom. The first season aired in 2016.



Floyd Mutrux apprenticed at the Alley Theatre in Houston and worked at Second City in Chicago; he attended Columbia University. He has conceived, written, directed, or produced 50 films, including *Dusty and Sweets McGee*; *Freebie and the Bean*; *Aloha, Bobby and Rose*; *The Hollywood*

Knights; *American Hot Wax*; *Dick Tracy*; *American Me*; *Blood In, Blood Out*; *There Goes My Baby*; and *Mulholland Falls*. With his wife Birgitte, he is preparing a new film *Moon Over Memphis* (a rock-and-roll Field of Dreams.) He also cowrote the musical *Baby It's You!* with Colin Escott and helped adapt *Sun Records*, the new television series based on *Million Dollar Quartet*. *Million Dollar Quartet* received three Tony Award nominations in 2010, including best book and best musical.



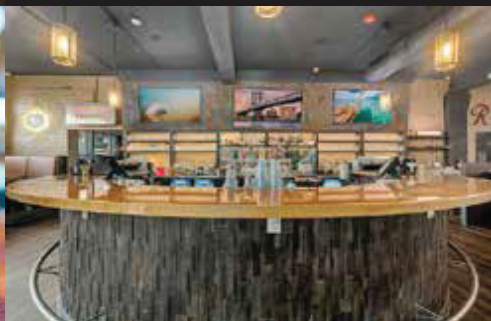
109 LEGION WAY SW
OLYMPIA, WA 98501



NICOLE'S BAR



FOOD, DRINKS
AND FUN FOR
EVERYONE.



MILLION DOLLAR QUARTET TIMELINE



1945

10-year-old Elvis Presley makes first public appearance at talent contest as part of Mississippi-Alabama Fair and Dairy Show. He sang “Old Shep.”

1946

14-year-old Carl Perkins and his brother Jay had their first paying gig (in tips) at the Cotton Boll Tavern, outside of Jackson, TN.

JANUARY 1950

Sam Phillips opens Memphis Recording Service with the slogan “We Record Anything-Anywhere-Anytime”

1952

Becomes Sun Records, a name meant to symbolize optimism, a new day, and new beginnings. Phillips and Sun Records initially focused on African American musicians, recording legendary artists like B.B. King and Howlin’ Wolf.

1953

Carl Perkins and the Perkins Brothers Band (with brothers Jay and Clayton) add W.S. “Fluke” Holland to the band as a drummer.

1954

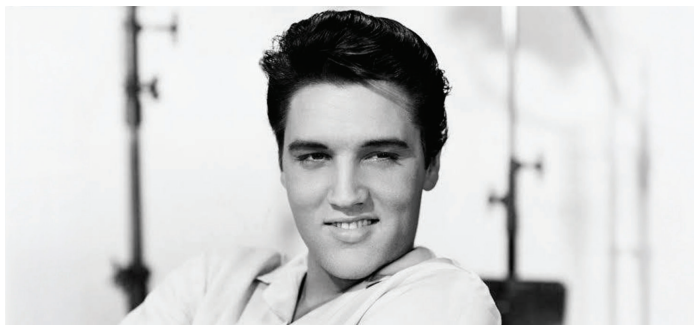
Phillips discovers 18-year-old Elvis Presley.

JULY 1954

Elvis’s first single with Sun Records was released: “That’s Alright / Blue Moon of Kentucky”

1955

Johnny Cash and his bandmates, Luther Perkins and Marshall Grant, sign with Sun Records



MARCH 1955

Carl Perkins’s “Movie Magg” and “Turn Around” released on Flip Records, a subsidiary of Sun Records. (Phillips didn’t want to release two artists on Sun Records – Perkins and Presley – that targeted the same audience.)

JUNE 1955

Sun Records releases Johnny Cash’s first single “Cry! Cry! Cry!” which becomes a country hit.

OCTOBER 1955

Sun Records releases Carl Perkins’s “Let the Jukebox Keep on Playing”

Sam Phillips launches WHER radio station, the first all-female radio station in the US.

NOVEMBER 1955

RCA Records purchases Elvis’s recording contract from Sun Records for \$35,000 (an unprecedented sum at the time!)

DECEMBER 1955

Carl Perkins writes and records “Blue Suede Shoes” for Sun Records. He wrote it as a nursery rhyme and put it on a boogie rhythm.

Johnny Cash’s “Folsom Prison Blues” is released and quickly becomes a hit.

JANUARY 1956

Elvis begins recording an album at RCA, which would include his version of “Blue Suede Shoes.” The full album was released in March 1956.

MARCH 1956

Carl Perkins and his brothers are in a car accident en route to New York City to appear on *The Perry Como Show*

MILLION DOLLAR QUARTET TIMELINE



APRIL 1956

Elvis performs “Blue Suede Shoes” on *The Milton Berle Show*

MAY 1956

Johnny Cash’s “I Walk the Line” is released and tops the Billboard Country charts.

SEPTEMBER 1956

Jerry Lee Lewis, 19 years old, comes to Sun Records to audition. However, Sam Phillips is on vacation so Lewis records demos for Phillips to hear upon his return.

DECEMBER 4 1956

MILLION DOLLAR QUARTET

APRIL 1957

Sun Records releases Jerry Lee Lewis’s “Whole Lotta Shakin’ Goin’ On”, which moves to #1 in the UK and #2 in the US.

JULY 1957

Jerry Lee Lewis appears on *The Steve Allen Show* and his dynamic, high-energy piano playing moves are captured on screen.

AUGUST 1957

Carl Perkins releases “That’s Right”, co-written with Johnny Cash

1958

Carl Perkins and Johnny Cash move to Columbia Records

Jerry Lee Lewis releases “Great Balls of Fire”



1960

“Fluke” Holland joins Johnny Cash’s band

1963

Jerry Lee Lewis’s Sun Records’ contract ends and he joins Smash Records.

1965

Carl Perkins joins Johnny Cash’s touring ensemble

JULY 1969

Sam Phillips sells Sun Records (to Shelby Singleton)

1980

Johnny Cash inducted into County Music Hall of Fame

1986

Elvis Presley and Jerry Lee Lewis part of inaugural class inducted into Rock and Roll Hall of Fame

1987

Carl Perkins, “King of Rockabilly”, inducted into Rock and Roll Hall of Fame

1992

Johnny Cash inducted into Rock and Roll Hall of Fame

1998

Elvis Presley inducted into Country Music Hall of Fame

2022

Jerry Lee Lewis inducted into Country Music Hall of Fame

MILLION DOLLAR QUARTET

CAST



Wyatt Brownell (he/him)
- *Jerry Lee Lewis*

Wyatt is a Texas based actor, musician, songwriter and playwright. A Louisiana native (born just one hour west of Jerry Lee's hometown of Ferriday), Wyatt looks forward to bringing some authentic southern charm in his seventh production as "The Killer." When he's not tickling

the ivories, Wyatt is developing new theatrical works. His current project, the cajun/folk historical drama *Man of the People: The Trials of Huey Long* was performed in concert as part of the 2025 Chicago Musical Theatre Festival. Recent roles include; Huey Long in *Man of the People*, Tucker Yelldell in *TEXAS Outdoor Musical!*, and Tranio in *Taming of the Shrew*. @geauxwyatt



Maverick McCarl (he/him)
- *Carl Perkins*

Maverick is thrilled to be a part of *Million Dollar Quartet* for the first time. Years ago this show inspired him to pick up his guitar with the dream of performing in it one day. For the past few years, he has been acting and composing at Central Washington University. Recent credits include Jud Fry in

Oklahoma! with Manestage Theatre Company and Ernst in *Spring Awakening* with Central Theatre Ensemble. Maverick wants to thank his family and friends for their unwavering support and encouragement. He hopes you have fun watching this incredible show!



Nathan Roberts (he/him)
- *Johnny Cash*

Nathan was the final Johnny Cash in Norwegian Cruise Line's long running production of *Million Dollar Quartet*, where he worked directly with the Original Broadway Creative Team. He often portrays Elvis as well! Selective MDQ: Meadow Brook Theatre, Phoenix Theatre

Company, Capital Repertory Theatre, SurfFlight Theatre, Alpine Theatre Project. Recent credits: *West Side Story* (Tony), *Heartbreak Hotel* (Elvis), *9 To 5* (Joe), *Into The Woods* (Cinderella's Prince/Wolf). Upcoming: MDQ at Maine State Music Theatre & The Public Theatre. REP: Resolute Artists Agency. NathanMichaelRoberts.com



Ben Bailey (he/him)
- *Elvis Presley*

Ben Bailey is so excited to make his Harlequin Productions debut! Ben is currently working at Walt Disney World with Actors' Equity Association in the *Frozen Sing-Along* alongside his wonderful wife and cast mate, Becca Bailey! Credits: Elvis Presley (*Million Dollar Quartet*) Interlakes

Theatre, Carl Perkins (*Million Dollar Quartet*) Shenandoah Summer Music Theatre, Tommy Ross (*Carrie: The Musical*) TheatreZone, and Sky (*Mamma Mia!*) Suncoast Broadway. Elvis Presley and the music of Sun Records has always been such an inspiration for him and he is so honored to get to bring this story to Olympia, Washington! @benianbailey



Casey Raiha (he/him)
- *Sam Phillips*

Casey returns to the role of Sam Phillips for the fourth time, AND his fourth show at the State Theater! Previous roles at Harlequin: Annas in *Jesus Christ Superstar*, and Brad Majors in *The Rocky Horror Show*. Local credits: Cinderella's Prince in *Into The Woods* (5th Avenue Theatre),

Barry Mann in *Beautiful* (Village Theatre), and Georg in *She Loves Me* (Renton Civic Theatre). Casey is also a Voice Actor, and can be heard on any Alexa device in the world, via the Amazon Storytime app. "Love to Caitlin and my folks!" www.CaseyRaiha.com



Becca Bailey (she/her)
- *Dyanne*

Becca Bailey is thrilled to make her Harlequin Productions debut! And to be in Washington for the first time! She lives in Orlando, FL with her husband, Ben Bailey. She is currently working full-time at Walt Disney World with Actors' Equity Association at the *Frozen Sing-Along* and she

recently performed at Epcot's *International Festival of the Holidays*. Credits: Dyanne (*Million Dollar Quartet*) ECTC, Orlando Shakes, Red Girl (*SHOUT! The Mod Musical*) Ocean City Theatre Company, and Karen (*Mean Girls*) The Ren. www.beccabailey.com @beccabailey

CAST Continued



Nick Rawson (he/him)
- *Brother Jay*

Nick Rawson, BA is a musician who lives in Olympia, WA on the ancestral lands of the s̓təčas (“Steh-Chass”) of the Squaxin Island Tribe. After completing undergraduate studies at The Evergreen State College and Berklee College of Music, he’s spent the last decade as

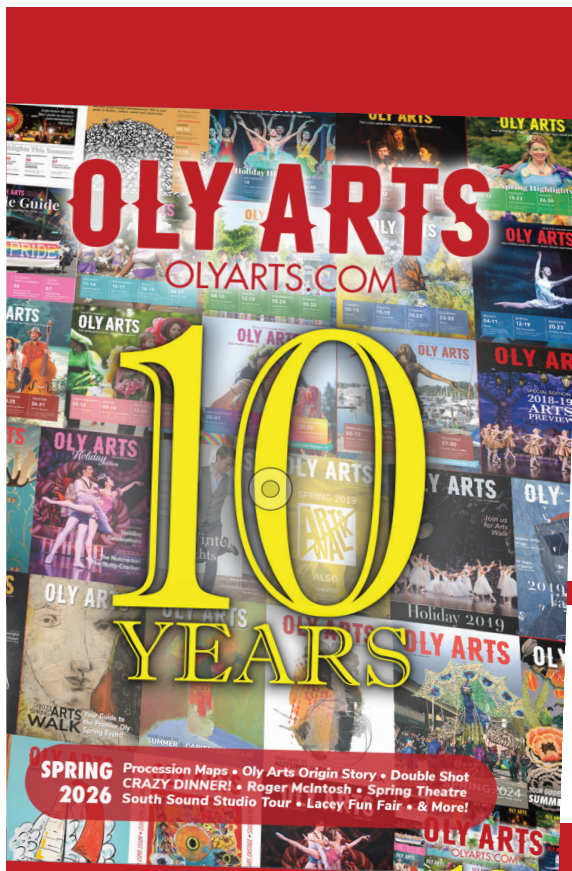
freelance musician, performing with local groups including Vendredi’s Bag, Eden Lane, Mud Bay Jugglers, Olympia Jamgrass Collective, Ethan Tucker Band, Yarrow, Denim Protégé, Generifus, Olympia Symphony Orchestra, and Vanguard Revival Orchestra West. Infinity thanks to my teachers Kathy Dorgan, Chip Schooler, Anna Jensen, Susan Hagen, Drew Buchman, Chico Herbison, James Schneider, and Zae Tinaza.



Will Madison (he/him)
- *Fluke*

Will Madison is a Tumwater local who has been playing music for most of his life. Will currently plays in the Black Hills HS jazz band, SPSCC Big Band, and recently won 1st place in multiple percussion at the 2026 WIAA state solo competition in Ellensburg. Will would like to

thank his family, friends, and everyone on his street, for tolerating his daily jam sessions in the garage.



OLY ARTS

OLYARTS.COM

Find out 24/7 what’s going on
in the arts of the South Sound
at: **OLYARTS.COM**



olyarts



olympiaartsnews

SUBSCRIBE to have our
stories & Calendar sent
straight to your inbox!

We do NOT give out your information.



Post your arts event for **FREE**
in our **CALENDAR**

MILLION DOLLAR QUARTET

CREATIVE TEAM

Emily A. Rollie (she/her) - Director

Emily A. Rollie is a director and intimacy choreographer based in Washington State, returning to Harlequin after directing *POTUS* in 2025 and *Pride & Prejudice* in 2024. Emily has directed in venues around the country, including productions of *The Wolves*, *Everybody*, *Ms. Holmes & Ms. Watson*, *Into the Woods*, and *Footloose*. She is the former artistic director for Independent Actors Theatre, a “purposefully nomadic” company known for its *short Women’s Play Festival* (the plays are short, not the women!). Emily teaches performance at Central Washington University and is faculty with Theatrical Intimacy Education, a founding member of PNW Theatrical Intimacy Collective, and a member of the Stage Directors and Choreographers Society.

Stephanie Layton (she/her) - Music Director

Stephanie is a multi-instrumentalist who recently returned to the PNW after a long stint in NYC. Her main gig is fronting jazz band Eden Lane, with appearances at the Rainbow Room, Joe’s Pub, Carnegie Hall (technically; it was a very fancy bat mitzvah gig) and countless events for fancy folks like Macallan Scotch, Etsy, and Charlotte Tilbury Beauty. Other musician credits include Williamstown Theater Festival, Florida Repertory Theater, drums/percussion gadgets for Bill Irwin’s clown act at NYC’s Irish Arts Center, and Harlequin’s *Sweeney Todd* and *A Christmas Carol*. Steph recently had the great joy of performing her original musical comedy act “A Word From Our Sponsor” at Seattle’s Moisture Fest (the world’s largest comedy & variety festival) for three weeks, and she is extremely grateful to be making her living in the arts. edenlanejazz.com

Jessica Low (she/her) - Choreographer

Jessica is a Director, Choreographer, Performer, and Teaching Artist who holds a Bachelor of Arts in Drama from the University of Washington. Credits include: *The 5th Avenue*, *Village Theatre*, *ACT*, *Arizona Theatre Company*, *Seattle Children’s Theatre*, *Showtunes*, *ArtsWest*, and *The Bigfork Summer Playhouse*. Previous Harlequin credits: *RENT*, *Cabaret*, *Jesus Christ Superstar*, and *Roots of Rock*. She won the 2014 Gregory Award for Outstanding Choreography for Sound Theatre Company’s *The Wild Party*. jessicaannlow.com

Christina Barrigan (she/her) - Scenic and Lighting Design

Christina Barrigan is delighted to be back with Harlequin Productions with these designs for *Million Dollar Quartet*. Past work with Harlequin includes *Wait Until Dark* (2026), *POTUS* and *RENT* (2025), *What the Constitution Means to Me* (2024), *Cabaret* (2024), *This Flat Earth* (2022), and *Blackbird* (2019). Her other work includes The Actors’ Theatre of Louisville’s *La Egoista*, B Street Theatre’s *Pickelball*, *Prince of Lightning: The Story of Young Nicola Tesla Boy Genius*, *Insertion*, *The Last Wide Open*, *Lovers and Executioners*,

Byhalia, MS, and *Holmes and Watson* and The Village Theatre’s *Welcome Back Holiday Concert*; Seattle Gilbert and Sullivan Society’s *Pirates of Penzance*, and with Wyoming Theatre Festival: *The Resolute*, *Another Roll of the Dice*, and *Hollywood, Nebraska*. She is also a resident teaching artist at Central Washington University, where she works on MainStage shows and new works. @barrigandesign

Jason Kramer (he/him) - Costume Design

Based in Seattle, this is Jason’s fourth show at Harlequin, having previously designed for *Wait Until Dark*, *POTUS* and *RENT*—and he’s thrilled to be here. He’s a costume designer who loves collaboration, believes joy is essential, and aims to make everyone feel seen (and maybe a little fabulous).

Keith Jewell (they/them) - Sound Design

Sound is all around us, yet nearly always invisible. It contributes to a sense of place, sets mood, and provides valuable cues about the world we inhabit. Keith grew up on a diet of audio stories from NPR, ZBS, Jim Copp, Bergman and Proctor, and old-time radio. This led to a passion for using sound to tell stories. From a 1993 puppet show adaptation of *King Lear* in the Star Wars universe, through over a hundred and thirty other productions, Keith has had the pleasure of getting to work with the exceptional designers, actors, and directors here at Harlequin for twenty-one seasons, as well as sixteen seasons at Saint Martin’s University. You also may have seen their work in Ripley’s “Believe It Or Not.” Recent and favorite Sound Designer credits here include *Murder on the Orient Express*, *RENT*, *Is This A Room*, *Sweeney Todd*, *Cabaret*, *Deathtrap*, *Hundred Days*, *Fun Home*, *Hedwig and the Angry Inch*, *Murder for Two*, and *August: Osage County*.

Dan Wolff (he/him) - Properties Design

Daniel comes from a background in practical design. He holds a degree in Wooden Furniture Design and a diploma in Fine Arts. His first job upon immigrating to the USA from Australia was as a wooden boat builder, and he still builds boats today. He’s excited for his third season working with Harlequin Productions.

Bridget House (she/her) - Wig, Hair and Makeup Design

While Bridget and her family may be new to the Olympia area, she is not new to a love of theater. Having been the Hair and Makeup Director for The Liberty Theater in Dayton, WA for 7 years, she has worked on productions such as *Oliver*, *Beauty and the Beast*, *Fiddler on the Roof*, *Once Upon a Mattress*, *Music Man*, *Christmas Carol*, and *Annie*. She’s excited to jump into theater again in her new community and has truly enjoyed her experiences with Harlequin and the players she has met. Bridget is a salon owner in Tumwater, calling The Craft salon her home.

CREATIVE TEAM *Continued*

Grace Helmcke (she/her) - *Dialect Coach*

Grace has been coaching dialects in the Pacific Northwest for six years, specializing in coaching theatrical productions and individuals in European and American accents. You may have seen her work at SecondStory Rep, Edmonds Driftwood Players and Reboot Theatre. She believes dialects are a part of identity and that we as storytellers have a duty to share these identities authentically. She's delighted to be working with Harlequin for the first time and hopes you enjoy the show!

PRODUCTION TEAM

Celeste Elaine (she/her) - *Stage Manager*

Million Dollar Quartet marks Celeste's twelfth production with Harlequin. A multi-hyphenate theatre artist, her past productions here include *Building Madness*, *Fun Home*, *Sovereignty*, *The Revolutionists*, *A Christmas Carol* (2022, 2023), *Deathtrap*, *The Complete Works of William Shakespeare (abridged)*, *Cabaret*, *Ms. Holmes and Ms. Watson - Apt. 2B* and *Where the Summit Meets the Stars*. Elsewhere, her choreography has been seen at area theaters and colleges, and she occasionally enjoys acting as well. Other favorite works include *Bug*, *Urinetown*, and *Company*. When not Stage Managing, Celeste spends her time enjoying matcha green tea and interior decorating her space.

Tommy McGee (he/him) - *Assistant Stage Manager*

Tommy is ecstatic to be working for Harlequin once again. Tommy has been working with Harlequin since 2016 as has been on the backstage of Harlequin doing everything from spotlight, to sound cues, to assistant stage managing. When Tommy is not backstage at Harlequin, he can be found indulging in his hobbies of writing and creating culinary delights.



First and foremost we are a full service butcher shop that cuts, grinds and stocks our case daily with a wide selection of house made sausages, bacon, fine cured meats, grass and grain finished beef as well as local pork, lamb, turkey and chicken.

OPEN Tues, Wed, 11 to 4pm Thursday - Saturday 11am to 6pm, Sunday 11am - 5pm, Closed Mondays
LUNCH Tuesday through Sunday 11:30am - 4pm

916 Fourth Avenue East, Olympia WA 98501 • (360) 915-9795

STATE THEATER INFORMATION

Concessions

Food is not permitted in the seating area. Water and beverages in plastic or paper cups are allowed. Please unwrap cough drops prior to the start of the performance.

Silence Your Cell Phone

In consideration of those around you, please silence all electronic devices and refrain from text messaging or utilizing your devices during the performance.

Assisted Listening Devices, Large Print & Braille Programs

Patrons with hearing disabilities may see the House Manager prior to the performance to obtain an enhanced hearing device. Large print and Braille programs are available at the Concessions counter.

Special Seating Needs

If you have a wheelchair, walker, or other special seating needs, please advise the Box Office in advance so we may accommodate you comfortably.

Accessible Performances & Community Talkbacks

The first Sunday matinee of each production will feature a post-show Talkback. The second Sunday matinee of each production will feature a Closed Captioning option. Every production will feature one Audio-Described performance, a live audio description of the performance. Most productions will also feature a Sensory-Friendly performance. House lights will be dimmed but not fully extinguished. Visit <https://harlequinproductions.org/talkbacks-accessible-performances/> for a complete list of performance dates.

Cameras & Recording Devices

The use of cameras (with or without flash) or other recording devices is prohibited.

Friends & Family

If you have a friend or family member in the cast with whom you wish to visit, please wait in the lobby following the performance where your person will find you. Notes, flowers, gifts and messages may be sent backstage through the House Manager.

Children & Youth

Please help us avoid disruptions that may affect others' enjoyment and the actors' performance. Disruptive children should be escorted to the lobby. No babes in arms, please. Some productions may not be appropriate for younger children, though discretion is left to the parent. Please call the Box Office with any questions concerning a play's content.

Late Seating

Latecomers will be seated in the Gallery at the back of the house, which provides a good vantage point with a minimum of disturbance. An usher will direct you to your seat at an appropriate break or at intermission. If you leave the house during the performance and return, please watch from the Gallery until an usher can direct you to your seat.

26/27 Season Subscriptions on sale now!

THE CENTER

26
27
SEASON

Subscribe and Save!

- ★ 15% DISCOUNT ON TICKETS!
- ★ EARLY ACCESS TO TICKETS!
- ★ AN INVITATION TO OUR SEASON PREVIEW!
- ★ SUBSCRIPTIONS START AT JUST 5 SHOWS!



Check out
our website
to see our
NEW season!



TICKETS GO
ON SALE TO
EVERYONE
JULY 16.



BOX OFFICE: (360) 753-8586 • WASHINGTONCENTER.ORG • 512 WASHINGTON ST. SE, OLYMPIA, WA 98501

FEATURED ARTIST

MIA SCHULTE

Mia Schulte was born in Turkey and grew up in many countries throughout Europe and the Middle East. Her careers have ranged from corporate work in Washington, D.C., to art teacher, to full time artist. Mia moved to Washington 19 years ago, and currently resides in Olympia. Inspired by the natural beauty of the state, she incorporates the beauty of natural forms in her abstract compositions. She was selected as one of the featured artists for an exhibition at SPSCC entitled, "Drawn to Abstraction: Four Artists, Four Visions." Her work has been in over 50 exhibitions, including the Washington Center for the Performing Arts, Seattle Design Center, Bellevue Community Art Museum, Tacoma Community College Gallery, as well as galleries and exhibitions in Seattle, Bellingham, Edmonds, Bellevue, and other cities throughout Washington, and in Oregon (Coos Art Museum and Cannon Beach). She was also selected to exhibit at the Prince Street Gallery in New York City. She is a member of Women Painters of Washington. Most recently her work was selected for the Hollywood Movie AVA.

"My art is a reflection of all of the influences in my life. I often think about a painting long before the image materializes. I look to nature for my forms and shapes, and look to my emotions/experiences for my image. I work on the floor so that I can have a 360-degree view and feel closer to the work. I often apply multiple layers combining the various mediums such as acrylic, ink, pastel, charcoal, etc. The painting evolves with each new layer as I proceed to clarify the message/feeling that I want to express. I am interested in painting about my impressions of a place/experience, and thoughts about life in general. Having studied and worked in various styles, I found that when I began working from memories, it was as if I had found home."



The Unexpected by Mia Schulte

FEATURED ARTIST

JUDITH SMITH

Judith earned her undergraduate degree in Art History at the University of Pittsburgh and her post-graduate degree in Bio-Communications (Art As Applied to Medicine) at the University of Toronto. Currently she lives with her husband, and a standard poodle named Kafka, in a 115 year old farmhouse in Thurston County, WA.

Coming from a background in medical illustration, drawing has always been my strength. Pastels afford me the opportunity of drawing and painting at the same time. I am generally wary of brushes; I love the direct involvement of pigment between hand and paper. For me, pastel is the only medium that truly captures and employs the electricity and intensity of color in painting. It is indeed "Magic Dust"! I use it now as an integral part of my mixed media work and also in my encaustic paintings.

"Whatever I choose as subject matter, my focus follows form and color, then line, and always beauty. I believe that beauty is inseparable from power and content; these are important considerations in my work."



Into The Fray by Judith Smith



**94.5 ROXY FM
PROUDLY SUPPORTS
HARLEQUIN
ENJOY THE SHOW!**

**COMMUNITY
CONNECTIONS
AND INFORMATION**

**MUSIC THAT
MATTERS**

**ENGAGING
PERSONALITIES**

ENERGY!

www.945Roxy.com



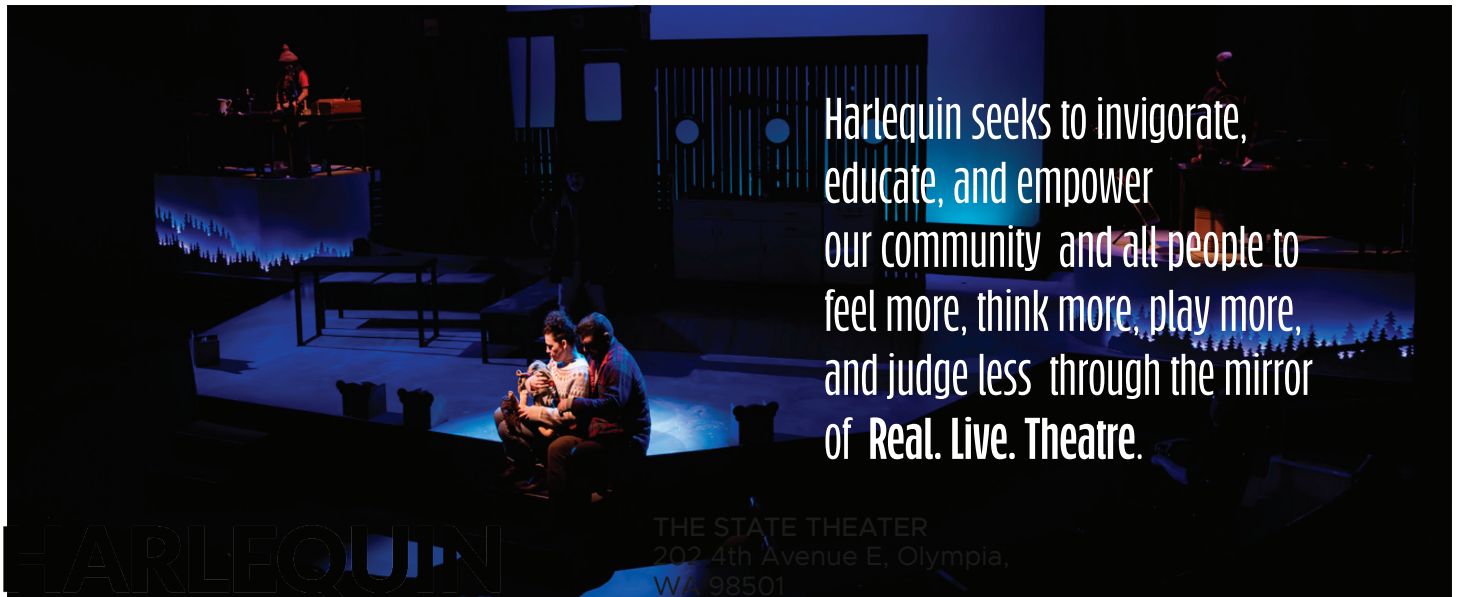
**Shanna
Paxton**
Photography

Specializing in events and portraits.

(360) 529 9332

Visit www.shannapaxton.co





Harlequin seeks to invigorate, educate, and empower our community and all people to feel more, think more, play more, and judge less through the mirror of Real. Live. Theatre.

THE STATE THEATER
202 4th Avenue E, Olympia,
WA 98501

Photo by Shanna Paxton Photography

ADMINISTRATIVE STAFF

- Aaron LambProducing Artistic Director
- Joe HyerDirector of Finance and Human Resources
- Olivia BurlingameDirector of Operations and Patron Services
- Helen Harvester Marketing and Communications Director
- Brennan Tucker..... Development Manager
- Gautam Dutta Front of House and Volunteer Manager
- Moni ShadaBox Office Associate
- Bethany Canchola, Christy Wallace..... Front of House/Box Office Swings
- Jim Kainber Capital Campaign Manager
- Piper Parker, Ross Miller Environmental Services
- John SerembeGraphic Designer
- Lynette Charters.....Gallery Curator

PRODUCTION STAFF

- Gerald B. Browning Director of Production
- Gina Salerno Company Manager
- Bruce Haasl Technical Director
- Olivia BurlingameLighting Supervisor
- Keith JewellSound Supervisor
- Lee W. LynchScenic Charge Artist
- Rob Taylor.....Master Electrician
- Ethan Bujeaud Master Carpenter
- Ed Salerno Carpenter
- Logan Simpson Carpenter

BOARD OF DIRECTORS

- Charli Terminelli.....President
- Erin Rand Vice President
- Eric Belgau Treasurer
- Si Sarton..... Secretary
- Carol Balderas, Geoff Crooks, Laurie Dolan, Kate Faro, Scott Freeman, Renee Radcliff-Sinclair, James D. Reddick..... Members

A Big *Thank You* to our Community Access Sponsors!

CAPITOL CITY PRESS
print positive

NAVIGATE FINANCIAL
Charting your journey

Heritage
BANK

DELMONICO'S
BUTCHERY

WASHINGTON STATE
arts
ALLIANCE FOUNDATION

ACTORS
EQUITY
ASSOCIATION 1913

TPS
THEATRE PUGET SOUND

tcg
Theatre
Communications
Group

OLYMPIA
DOWNTOWN ALLIANCE

Harlequin Productions is a member of Theatre Communications Group (TCG), Thurston County Visitor and Convention Bureau, Theatre Puget Sound (TPS), Washington State Arts Alliance, Thurston County Chamber, Yelm Area Chamber of Commerce, Olympia Downtown Association, Economic Development Council of Thurston County and South Sound Partners for Philanthropy.

CELEBRATING 100 YEARS SERVING OUR COMMUNITY 1922-2022



KGYMEDIAGROUP.COM

DOING GOOD IS PART OF OUR DNA.

Together with our employees, Heritage Bank supports hundreds of local nonprofit organizations, with donations of time, resources and money, while leveraging our banking expertise to support affordable housing and financial literacy projects that strengthen our communities.

Because we know when neighbors help neighbors, the whole community benefits. And that's true prosperity.

Learn more and read our annual Community Impact Report at heritagebanknw.com/community.



Heritage
BANK

 Equal Housing Lender | Member FDIC



SOUTH SOUND Psychotherapy

supports

Real. Live. Theater.

Peter J. Sanderson
LMFT, MHP, CMHS

Individual therapy with adults and adolescents

Olympia: (360) 786-9499 • Shelton: (360) 427-0853

Contact: peter@southsoundpsychotherapy.com

INDIVIDUAL CONTRIBUTORS (May 22, 2025 to May 22, 2026)

Artistic Director's Circle

From \$10,000

Jay Goldstein and Jill Rosenkrantz
Fred and Karey Griesman
Mary Ellen and Greg Psaltis ☺
James and Sharon Reddick

Producer's Circle

From \$5,000

Carlson Family
Sallie and John Parr
Bill Pope
Renee Sinclair
Gloria and Skip Strait

Artist's Circle

From \$2,500

Sally Alhadeff and Bob Sundstrom
Judy Covell and Mike Kretzler
William and Joan Cullen
Lee Ann Gekas and Michael Greenstreet
Judith and Steve Harvester ☺
Beth Morrison and Geoffrey Crooks
Janet Mueller and Gerald Magnoni ☺
Cheryl Parker
George Sharp
Paul Shepherd
Todd Stamm and Melanie Tyler
John Mark Wagner

Benefactor

From \$1,000

Thomsen Abbott and Teresa Scharff ☺
Pam and Alan Anderson ☺
Joe and Kento Azegami-Hyer
Kristine and David Bartruff
Daniel Berschauer and Phyllis Edwards
Rhoda Besecker ☺
Michael Bezdziecki ☺
Dick and Renee Binns

Mary Winkler and Alex Broman
Larry and Donna Brooke ☺
Carolyn Bureson and Robert Bureson
Linda Canfield ☺
Pat and Warren Carlson ☺
Michael Partlow and John Carmichael
Lanette Corzine
Arthur and Laurie Dolan
Kevin Feely
Paula and Rick Finch
Ann Flannigan and Peter Rex
Jean Gunnarson
Marlyce and Frank Hansen
Hank and Helen Henry
Dr. Irene and Mr. Glen Hunter
Jim Kainber
Sandra and Ken Kelnhofer
Frank Kersul
Robert Krause
Aaron Lamb and Helen Harvester ☺
Gordon and Nancy Lamb ☺
Barbara Lane
Nancy and Catherine LaPointe
Diana Larsen-Mills and Kenneth Guza
Vicki Lovegren ☺
Lizz Maunz and Art Simpson
Pamela Meredith ☺
Tricia Murphy
Cara Myhre ☺
Stephen and Jo-Kathlyn Northcutt
Diana and Stephen Purvine ☺
Peter and Cynthia Sanderson ☺
Paula Schweich and Stephen Mishkin
Nita and Robert Sell
Oscar and Barbara Soule
Michael Sugarman
Charli Terminelli
Priscilla and Thomas Terry
Jim This ☺
Randall Todd ☺
Dan and Cindy Tufford ☺
Randall and Debra Weitzel ☺

Mary and Bob Wharton
Mary Wilkinson and Joe Ford ☺

Investor

\$25/mo. or \$300/yr.

Melissa Allen
Anonymous
Katherine Baros Friedt and Paul Seabert
Kathryn Benkert
Mary Bradley
Tom Bristow
Gerald Browning
Kathleen Callison
Chris and Geri Carlson ☺
Chrissy Carlson
Ben and Deborah Cushman ☺
Lowell and Ida Dightman
Sammie Downing ☺
Beth Dubey ☺
Debbie Ehri ☺
Paul and Mary Anne Enns ☺
Candace Espeseth ☺
Marcia Evans ☺
Kate Feeley Lynch
Maureen Fitzgerald and James Krupke
David & Sue Foyle
Carol McKinley
David Giglio ☺
Jeffery Goltz and Mary Welsh
Marjorie and John Gray ☺
Margaret Gustin
Elizabeth and Kevan Hagen ☺
Debbie Hall and Ron Smith
Steve Wang and Kathryn Hamilton-Wang
Jon Hamilton
Allison Hanna and Stephen Christensen ☺
Gillian Haws ☺
Kathryn Hegtvedt
Kathryn and Brandon Hennegan ☺
Linda and David Hoffman ☺
Richard and Dianne Hurst ☺
Sterling Ingram ☺
Nancy and Tom Inui
Lois Jacobs

Keith Jewell and Sara Schwartz Jewell ☺
Marlisa Johnson ☺
John Joseph ☺
Ericka Kaplan and Stephen Moore ☺
Dennis and Stephanie Kellogg ☺
Marie Kirk ☺
Paul Knox and Sara Holt-Knox ☺
Candie Kohler ☺
Helen and John Kramer ☺
Katherine and Michael Krysty
Amanda Kuehn ☺
Jamie Langford-Herbig ☺
Jenine Laughead
Merrilee MacLean
Gayle and R. Bruce Magee
Brian Markham
Fred McDowell
Janet McLane ☺
Sharyn Merrigan
Richard Mesmer
Ivri Messinger
Tracy Metrovich
Shauna Mitchell & Tacoma's Bluemouseketeers ☺
Patti and Victor Moore ☺
Edward Morgan ☺
David and Celia Nightingale ☺
David and Jane Nowitz
Meredith and Tom O'Kelley ☺
Linda O'Leary
Wayne and Betsy Olsen
Jeff Osborne ☺
Susan Perkins ☺
Kimberly Peterson
Kristina Pierce ☺
Cleveland and Marty Pinnix
Vincent Prohaska and Kathleen Brown ☺
Anne and Robert Radford ☺
Erin Reetz
Laurie Rogers and Rich Gailey ☺
Henry and Leslie Romer
John Rosenberg and Nancy Faaren
Amanda Sue Rudisill and Michael Stapleton

INDIVIDUAL CONTRIBUTORS (May 22, 2025 to May 22, 2026)

Investor Continued

\$25/mo. or \$300/yr.

Si Sarton
Amanda Schaffer
Barbara
and Lloyd Schneider
J'keren Sears
Bruce Silverman
and Courtney Nevitt
Laurel Smith
Mary Stanton-Anderson
and Roger Clark
Stacy Steck
Dawn Stremel
and Ruth Conn
Bruce
and Olga Sutherland
Helen Tafajian
Jennifer Thacher
Jonathan Waller
Nancy and Michael Walsh
Robert Weber
Miranda Wecker
Cynthia Wilson
and Bill Graeber
Donald and Judy Wilson
Ellen and Carl Wolfhagen
Bonnie Wood

Partner

\$10/mo. or \$100/yr.

Edward Adelson
Jeanne Allan
Christine Allen
Carman Ambrose
Valerie Anderson and
Brendajean Warner
Crystal Ashley
Thomas Badger
and Wendy Gerstel
Tracy Bahm
Janet Ball
and David Monthie
Leila Bardsley
Marshall Barnes
Patricia K. Barr
Mary Barrett
Ina Barry
Richard
and Mary Bartholomew

Nancy Beardsley
Francisca and Rick Beaver
Lois Beck
Bonnie Benard
Joni Bennett
Marilyn and George Berko
Karline and Rick Bird
Joe Blotner
Betty Bookheim
Mison Bowden
Kelly Brannock
Kerry Bringman
Richard Brooke
Jim Kruidenier
and Susan Bryant
Nancy Buehler
Rebecca Buettner
Sandra Campbell
Beth and Ken Capek
Linda Carbonneau
Kathy and Dave Carlson
Ingrid Carson
Edsonya Charles
Donald Chinn
Fran Clifton
Aspen Clontz
Mark Cockerill
Diane and Rick Cooper
Tom Craven
Rachel Crum
Diane Dakin
Mouer De'Eldred
Edward Dee
and Carolyn Carlson
Daniel Delaney
John E Dugaw
Deb Dunham
Deborah Dunlap
Cornelia Duryee
Diana Ehri
Leslie Emerick
Tammie and Gordon Ensign
Max Erickson
Kate Faro
Signe Feeney
and William Rozon
Susan Finlay
Mary Ann Firmin
Skye Fitzpatrick
Lea Flanagan

Karen Fraser
Kim Fraser
Desiree Freeland
Andy Garness
and Gina Salerno
Tara Geraci
Heather Glock
Andrew Gordon
Gail Gosney Wrede
and Fritz Wrede
Michael Gray and
Jackie Nordquist Gray
Kristopher Grinnell
Brian and Cindy Gunn
Christy Gustafson
Janelle Guthrie
Jon Halvorson
Michael Hankins
Alan Hardcastle
and Karen Ray
Edie Harding and Dave Smith
Shamus Harmon
Rachel Hatfield
Hilarie Hauptman
Betsy Hildreth
Ruth Hill
Kelsey Hodgkin
Cathy Hodgson
Margaret Holm
Marcia Hopkins
Kathleen Houston
Leslie Huff
Nelson Hunt
Cynthia Ivey
Veronica Jarvis
Derek Jenkins
Melissa Johnson
Alvin Josephy
Kathy and Rick Judd
Karol and Leyton Jump
Rich Kalman
Kelly and Kevin Kerr
Joy Scholz
and Greg Kirkpatrick
Randy Kline
Evynd Knolle
Nancy Krier
Friedlinde and
Eckhard Krotscheck
Debbie Kushibab
Michael Lange
and Valerie Vance

Barbara and Leif Lantz
Ronald Lavigne
and Lisa Vatske
Xander Layden
Jared Leuschen
John Lindberg
and Tristan Wise
Collum and Martha Liska
Chris and Gail Lissandrello
Linda Luebcke
Karen Lund
Pamela Maciel
Heather MacMaster
Janie Maki
Paul and Robyn Malmberg
Jennifer Maurer
Jill P and Robert May
Rob McAdams
Mary McCarthy Hintz
Shawn McDonald
Marion Mcintosh
John Aakre
and Cynthia Michael
Michael Middleton
Mickie Milton
Randi Moe
Ushole Monjok
Catherine Moore
Linda Moore
Michelle Morris
Shannon
and Robert Moser
Tanya Mote
Shaleen Murphy
Scott and Pam Nolte
Kris Norelius and Brian Faller
Michelle Nurmi
Richard O'Grady
Irina and
Maria Osechinskaya
Vanessa Palensky
Marina Parr
Dorothy Parshley
Michael Patrick
Brenda Paull
Shanna Paxton
Jacob Peetz
Kathy Perry
Ken and Suzanne Philen
W. Scott Pinkston
Sue and Howard Poler

INDIVIDUAL CONTRIBUTORS (May 22, 2025 to May 22, 2026)

Britt Pomush 🇺🇸
Paige Porter 🇺🇸
Cynthia and David Pratt
Tom Price 🇺🇸
Jester Purtteman
Barbara Putnam 🇺🇸
Erin Rand 🇺🇸
Melanie
and Timothy Ransom
Bridget Ray 🇺🇸
JoAnn Reitzwood
and James Wood
Leah and Larry Richards
David Robinson 🇺🇸
Rebel Romero 🇺🇸
Lorre Rosen 🇺🇸
Christopher Rozwod
Alan and Lynn Ruger 🇺🇸
Sophia Rychener 🇺🇸
Laurie Sale

Emily Saunders 🇺🇸
Ali Schaafsma
Mary Schaefers
Renée Schelper-Zimmerman
Charles and Joan Schooler
Brian Scott
Dan Seachord 🇺🇸
Stephanie Seitz 🇺🇸
John Selby
John
and Lynette Serembe 🇺🇸
Dawn Shahar
Matt Shimkus and
Emilie Rommel-Shimkus 🇺🇸
Dawn Shuford-Pavlich 🇺🇸
Kathryn Simmons 🇺🇸
Micki Simon
Anna Sommers 🇺🇸
Heather
and Eric Sparkman 🇺🇸

Sandra and Mark Spee
Justin Speer 🇺🇸
Chad and Kristen Standifer
Diane and Ronald Stanger
Cindy Starkey 🇺🇸
Mikayla Starkey 🇺🇸
Cherie and Gary Stedman 🇺🇸
Darlene Steinbach
Scott Steinbach 🇺🇸
Ann Stephenson 🇺🇸
Joseph Stitzel 🇺🇸
Ken and Dawn Stone
Shell Stowell 🇺🇸
Courtney Summers 🇺🇸
R. J. Widrow
and Carolina Sun-Widrow
Janet Swanson
and Gary Minns 🇺🇸
Caralyan Tebow
Evette Temple

Mary Tennyson
Elizabeth Thissell 🇺🇸
Jennifer
and Chris Thompson 🇺🇸
Steve and Tracey Tillman 🇺🇸
Robert Tinsley
and Kathleen Lillis 🇺🇸
Sara Trowbridge
Lenda and Gene Tveden
Connie and Bill Vasek
Jeff Wagner 🇺🇸
Marilee Warren
Alice and George Watland
Marshall Welch 🇺🇸
Danielle Welliever
Karolina Wilczynska-Oberc
Star Wuerdemann
Richard Yescas
Kim Young

Thank you for supporting
Real. Live. Theatre.



Green Mountain
PSYCHOTHERAPY

When you're ready to talk about it.

GreenMountainPsychotherapy.org
contact@greenmountainpsychotherapy.org
360.284.0006

CORPORATE & FOUNDATION CONTRIBUTORS (May 22, 2025 to May 22, 2026)

Alhadeff Family Charitable Fund
 America Online Giving
 ArtsFund
 Deena McClain Living Trust
 Inspire Olympia
 Kroger - Fred Meyer Rebate Program

M J Murdock Charitable Trust
 PayPal Giving Fund
 Richard P. Hoffman Trust
 Shubert Foundation
 The Community Foundation of South Puget Sound
 The Community Foundation

of South Puget Sound's Vannerson Family Advised Fund
 The Norcliffe Foundation
 Tom Badger & Wendy Gerstel Giving Fund
 Washington Hospitality Association

Washington State Arts Commission
 Washington State Combined Fund Drive
 Washington State Department of Commerce

TRUSTED BUSINESS PARTNERS AND UNDERWRITERS

Bite Me Catering PNW
 Cascade PBS
 Capital Heating and Cooling
 Capitol City Press
 Captain Little
 Compass Rose
 Cynara Restaurant & Lounge
 Heritage Bank
 Iron Rabbit Restaurant & Bar

KGY 95.3
 KNKX 88.5
 Mighty Tripod
 Navigate Financial
 Nicholson and Associates Insurance LLC
 Nicole's Bar
 Octapas Cafe & Restaurant
 Oly Arts
 Olympia Dance Center

Olympia Downtown Association
 Olympia Federal Savings
 Olympia Symphony Orchestra
 PARC Foundation
 Puget Sound Energy
 Republic Services
 Roxy 94.5
 Shanna Paxton Photography

Sky Bear Media
 Storman's Inc.
 Swing Wine Bar And Cafe
 Tacoma Arts Live
 The Washington Center for the Performing Arts
 Thurston County Chamber of Commerce
 TVW
 Uptown Grill
 Venables Pest Management

KALEIDOSCOPE
 2026-27 SEASON

LIFT OCT 11
 GERSHWIN'S RHAPSODY IN BLUE

EVOLVE NOV 8
 STRAVINSKY'S THE SOLDIER'S TALE

CONNECT FEB 7
 BEETHOVEN'S "PASTORALE" SYMPHONY

EMBRACE MAR 21
 ELGAR'S ENIGMA VARIATIONS

DREAM APR 18
 DVOŘÁK'S "NEW WORLD" SYMPHONY

SUBSCRIPTIONS NOW AVAILABLE!
OLYMPIASYMPHONY.ORG

CAPITOL CITY PRESS

*A dramatic supporter of
 Harlequin Productions!*

PRINT | MAIL | PACKAGING | WIDE FORMAT

www.capitolcitypress.com + (888) 943.3556

print positive

JOIN US AND RECEIVE MEMBER BENEFITS

Include a tax-deductible donation with your subscription

and help Harlequin create **Real. Live. Theatre.** for years to come.
As a thank you, you'll receive the exciting benefits below.

In addition, **all Donors** at the Partner level and above receive 25% off concessions for the year.

	Partner \$10/mo. or \$100/yr	Investor \$25/mo. or \$300/yr	Benefactor \$1,000	Artist's Circle \$2,500	Producer's Circle \$5,000	Artistic Director's Circle From \$10,000
<i>Donor pricing at concessions</i>	✓	✓	✓	✓	✓	Artistic Director's Circle benefits are highly personalized. If you are interested in giving at this level, please contact Brennan Tucker at: brennan@harlequinproductions.org
<i>Name in program and on website</i>	✓	✓	✓	✓	✓	
<i>Invite for two to a technical dress rehearsal</i>		✓	✓	✓	✓	
<i>Invite for two to attend an artistic director's brunch</i>			✓	✓	✓	
<i>Complimentary tickets to the 2026 Gala</i>				✓	✓	
<i>Invite for two to a behind-the-scenes Production Tour</i>					✓	

MUTUAL MEANS MORE.

PHILANTHROPY



Extraordinary giving for local impact.

ACCOUNTABILITY



We answer to you, not shareholders.

100% LOCAL

Relationships with hometown care & insight.








BANKING THAT'S MUTUAL

olyfed.com



A **vibrant arts culture** attracts talent and investment and supports a **prosperous community.**

In its 150th year, the Thurston County Chamber is proud to support Harlequin Productions.





Building Prosperity Since 1874



Family owned and operated for three generations, Capital Heating, Cooling, Plumbing & Electric is run by the Schmidtke brothers. Pictured above are Bill, Chuck and Dean, who are proud to carry on the family tradition of customer satisfaction and quality service

NOW OFFERING HEATING, COOLING, PLUMBING & ELECTRIC HOME SERVICES

In addition to our heating, cooling, and sheet metal services, we now offer full-service residential and commercial plumbing products and electrical services In the Southsound area.



Scan to Schedule or for Information

Call or Text 360.491.7450 or Visit ComfortSince1937.com

Supporting the Arts and Our Community for Four Generations



HEATING ■ COOLING ■ PLUMBING ■ ELECTRIC

DELIVERING COMFORT SINCE 1937

License: #CAPITHC9483N3

